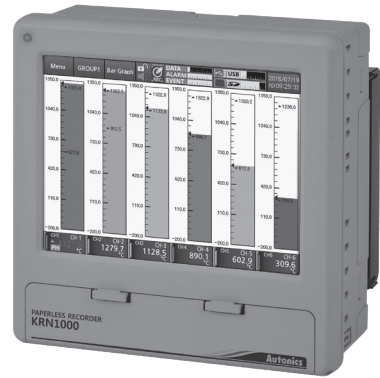


KRN1000 Series

LCD Touchscreen Paperless Recorder

■ Features

- 5.6-inch color TFT LCD (640×480) touchscreen display with excellent readability and intuitive control interface
- Supports 27 input types (thermocouple, RTD, analog voltage and current[shunt])
- 4 / 8 / 12 / 16 input channel models available
- Various communication methods (RS422/485, Ethernet, USB) standard
- 25 to 250 ms high-speed sampling, 1 to 3600 s recording cycle
- 200 MB internal memory and external memory support (SD/USB up to 32 GB)
- Store and backup internal data to external memory (SD/USB)
- 9 different graph types available
- Various option input/output available: digital input (contact/non-contact), alarm output, transmitter power output
- Compact, space-saving design (rear length: 69.2 mm)



 Please read "Safety Considerations" in the instruction manual before using.



■ Manuals

- For more information and instructions, refer to the user manual and the user manual for communication. Visit our website (www.autonics.com) to download the manuals.
- The user manual includes product specifications, functions, and operations.
- The user manual for communication includes information about Modbus RTU protocol, Modbus TCP protocol, and Modbus mapping table.

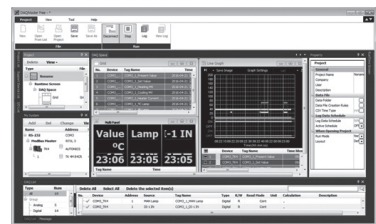
■ Comprehensive Device Management Program (DAQMaster)

- DAQMaster is comprehensive device management program for convenient management of parameters and multiple device data monitoring.
- Visit our website (www.autonics.com) to download user manual and comprehensive device management program.

< Computer specification for using software >

Item	Minimum requirements
System	IBM PC compatible computer with Intel Pentium III or above
Operations	Microsoft Windows 98/NT/XP/Vista/7/8/10
Memory	256MB+
Hard disk	1GB+ of available hard disk space
VGA	Resolution: 1024×768 or higher
Others	RS-232 serial port (9-pin), USB port

< DAQMaster screen >




LCD Touchscreen Paperless Recorder

Ordering Information

KRN1000	—	04	0	1	—	0	S	
								Case
								S
								Standard panel installation type
								Power supply
								0
								100-240VAC 50/60Hz
								Communication output
								1
								RS422/485+Ethernet+USB Device
								Option input/output
								0
								None
								1
								Alarm relay output 8 channels
								2
								Alarm relay output 6 channels + Digital input 2 channels
								3
								Alarm relay output 6 channels + 24VDC power output for transmitter
								4
								Alarm relay output 4 channels + Digital input 2 channels + 24VDC power output for transmitter
								Input channels
								04
								4 channels
								08
								8 channels
								12
								12 channels
								16
								16 channels
								Item
								KRN1000
								Paperless recorder

Specifications

Series	KRN1000	
Power supply	100-240VAC~ 50/60Hz	
Allowable voltage range	85 to 110% of rated voltage	
Power consumption	Max. 23VA	
Screen	Display method	5.6 inch TFT Color LCD
	Resolution	640×480 pixels
	Adjusting brightness	3-level (Min/Standard/Max)
	Input method	Touch screen (pressure sensitive type)
Number of input channels	4 / 8 / 12 / 16 channels	
Universal input ^{※1}	Temperature sensors (thermocouple, RTD), Analog (voltage, current (shunt))	
Sampling period	1 to 4-CH: 25ms/125ms/250ms, 5 to 16-CH: 125ms/250ms (internal sampling period is average movement filter and alarm output operation unit time)	
Recording period	1 to 3600 sec	
Internal memory	Approx. 200MB	
External memory ^{※2}	SD / USB memory max. 32GB	
Dielectric strength	2300VAC 50/60Hz for 1 min (between power terminals and case) ※Except Ethernet and USB device	
Vibration	Mechanical	10 to 60Hz 4.9m/s ² in each X, Y, Z direction for 1 hour
	Malfunction	10 to 60Hz 1m/s ² in each X, Y, Z direction for 10 min
Insulation resistance	Over 20MΩ (at 500VDC megger)	
Noise immunity	±2kV the square wave noise (pulse width 1μs) by the noise simulator	
Time accuracy	Within ±2 min/year (available up to 2099)	
Protection structure	IP50 (front part)	
Environ-ment	Ambient temperature	0 to 50°C, storage: -20 to 60°C
	Ambient humidity	35 to 85%RH, storage: 35 to 85%RH
Approval	CE 	
Weight ^{※3}	Approx. 1290 to 1400g (approx. 590 to 700g)	

※1. For more information of universal input, please refer to 「Input/Output」.

※2. This is included in the product. In case of using the USB flash drive that the user purchased, the device may not be supported.

※3. The weight includes packaging. The weight in parenthesis is for unit only.

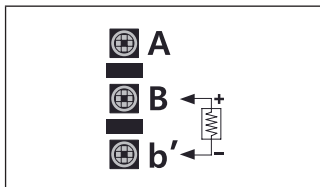
※Environment resistance is rated at no freezing or condensation.

KRN1000 Series

Input/Output

Type	Input/Output type		Description
Universal input	Input type	RTD	JPt100Ω, DPt100Ω, DPt50Ω, Cu100Ω, Cu50Ω (supplied current: approx. 190μA)
		Thermocouple	B, C (W5), E, G, J, K, L, L (Russia), N, P, R, S, T, U
		Analog	Voltage: ±60mV, ±200mV, ±2V, 1-5V, ±5V, -1V-10V Current: 0-20mA, 4-20mA (measurable when using 250Ω shunt resistance) ^{※1}
	Input impedance		Voltage (V): approx. 205kΩ RTD, Thermocouple, Voltage (mV): min. 200kΩ
	Display accuracy ^{※2}	RTD	Warm-up time: Max. 30 min
		Thermocouple	At room temperature (25°C±5°C): ±0.1% F.S.±1-digit
Analog		Out of room temperature: ±0.2% F.S.±1-digit	
Resolution		16-bit	
Option input/output ^{※3}	Digital input	No-contact input	ON: residual voltage max. 1VDC, OFF: leakage current max. 0.1mA
		Contact input	ON: max. 1kΩ, OFF: min. 100kΩ, Short-circuit: approx. 4mA
	Alarm relay output	Capacity	250VAC~ 3A, 30VDC= 3A, 1 Form A (resistive load)
		Life cycle	Mechanical: min. 20,000,000 operations Electrical: 100,000 operations (250VAC~ 3A, 30VDC= 3A)
	Power output for transmitter ^{※4}		24±2VDC=, max. 60mA ※Built-in over current protection circuit
Communication output ^{※5}	RS422/485		Modbus RTU ※It is recommended to use shielded cable over AWG 24.
	Ethernet		IEEE802.3 10 BASE-T / IEEE802.3U 100 BASE-TX (Modbus TCP)
	USB Device		USB V2.0 Full Speed (Modbus RTU)

- ※1. Current measurement and connection examples
Connect 250Ω shunt resistance and set analog input type 0-20mA (shunt) / 4-20mA (shunt).
It is available to measure 0-20mA / 4-20mA current.



- ※2. ○ At room temperature (23°C ± 5°C)
 · RTD Cu50Ω (-200≤T≤200): (±0.1% F.S. or ±1.5°C, select the higher one) ±1 digit
 · RTD DPt50Ω (-200≤T≤500): (±0.1% F.S. or ±1.5°C, select the higher one) ±1 digit
 · Thermocouple R, S, C, G type (0≤T≤100): (±0.1% F.S. or ±4.0°C, select the higher one) ±1 digit
 · Thermocouple U, T type (-100≤T≤400): (±0.1% F.S. or ±2.0°C, select the higher one) ±1 digit
 · Thermocouple B type, below 400°C: there is no accuracy standards.
 · All thermocouples, below -100°C: (±0.3% F.S. or ±4.0°C, select the higher one) ±1 digit
 ○ Out of room temperature range
 · RTD Cu50Ω (-200≤T≤200): (±0.2% F.S. or ±3.0°C, select the higher one) ±1 digit
 · RTD DPt50Ω (-200≤T≤500): (±0.2% F.S. or ±3.0°C, select the higher one) ±1 digit
- ※3. Input/Output is different by option. Please refer to 「Ordering information」.
- ※4. For supplying power for transmitter, it is recommended to use shield cable to reduce noise.
- ※5. RS422/485, Ethernet, USB device communication outputs are not used at the same time.
- ※If sensor input line is longer, it is recommended to use shield cable to reduce noise.

LCD Touchscreen Paperless Recorder

Input Type and Range

Input type		Display	Input range		
			°C	°F	K
Thermocouple	K(CA)	TC-K	-200.0 to 1350.0	-328.0 to 2462.0	73.2 to 1623.2
	J(IC)	TC-J	-200.0 to 800.0	-328.0 to 1472.0	73.2 to 1073.2
	E(CR)	TC-E	-200.0 to 800.0	-328.0 to 1472.0	73.2 to 1073.2
	T(CC)	TC-T	-200.0 to 400.0	-328.0 to 752.0	73.2 to 673.2
	B(PR)	TC-B	100.0 to 1800.0	212.0 to 3272.0	373.2 to 2073.2
	R(PR)	TC-R	0.0 to 1750.0	32.0 to 3182.0	273.2 to 2023.2
	S(PR)	TC-S	0.0 to 1750.0	32.0 to 3182.0	273.2 to 2023.2
	N(NN)	TC-N	-200.0 to 1300.0	-328.0 to 2372.0	73.2 to 2023.2
	C(TT) ^{※1}	TC-C	0.0 to 2300.0	32.0 to 4172.0	273.2 to 2573.2
	G(TT) ^{※2}	TC-G	0.0 to 2300.0	32.0 to 4172.0	273.2 to 2573.2
	L(IC)	TC-L	-200.0 to 900.0	-328.0 to 1652.0	73.2 to 1173.2
	L(Russian type) ^{※3}	TC-L_R	0 to 600.0	32.0 to 1112.0	273.2 to 873.2
	U(CC)	TC-U	-200.0 to 400.0	-328.0 to 752.0	73.2 to 673.2
	Platinel II	TC-P	0.0 to 1350.0	32.0 to 2462.0	273.2 to 1623.2
RTD	Cu50Ω	CU50	-200.0 to 200.0	-328.0 to 392.0	73.2 to 473.2
	Cu100Ω	CU100	-200.0 to 200.0	-328.0 to 392.0	73.2 to 473.2
	JPt100Ω	JPT100	-200.0 to 600.0	-328.0 to 1112.0	73.2 to 873.2
	DPT50Ω	DPT50	-200.0 to 600.0	-328.0 to 1112.0	73.2 to 873.2
	DPT100Ω	DPT100	-200.0 to 850.0	-328.0 to 1562.0	73.2 to 1123.2
Analog	Voltage	-60.00 - 60.00mV	±60mV	Resolution : 10μV	-99999 to 99999 (display range depends on the decimal point position)
		-200.00 - 200.00mV	±200mV	Resolution : 10μV	
		-2.000 - 2.000V	±2V	Resolution : 1mV	
		1.000 - 5.000V	1-5V	Resolution : 1mV	
		-5.000 - 5.000V	±5V	Resolution : 1mV	
		-1.00 - 10.00V	-1V-10V	Resolution : 10mV	
	Current (shunt)	0 - 20mA	0-20mA (shunt)	—	
		4 - 20mA	4-20mA (shunt)	—	

※1. C (TT): Same as existing W5 (TT) type sensor

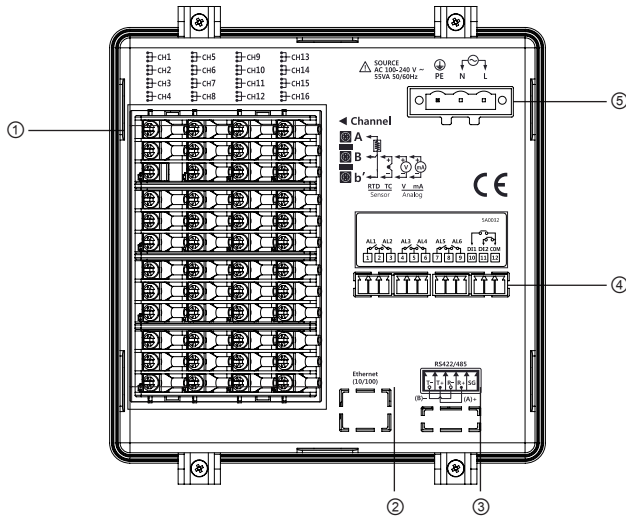
※2. G (TT): Same as existing W (TT) type sensor

※3. Russian type L type temperature sensor is divided from general purpose L type.

KRN1000 Series

Connections

KRN1000 Rear part



- ① Sensor input terminal: Connects universal input.
- ② Ethernet port
: Connector for Ethernet cable.
It communicates Modbus TCP.
- ③ RS422/485 port
: Connects RS422/485 for Modbus RTU comm.
- ④ Option input/output port
: Connects for option input/output .
- ⑤ Power input
: Power connection (100-240VAC 50/60Hz)

Input/Output Circuit

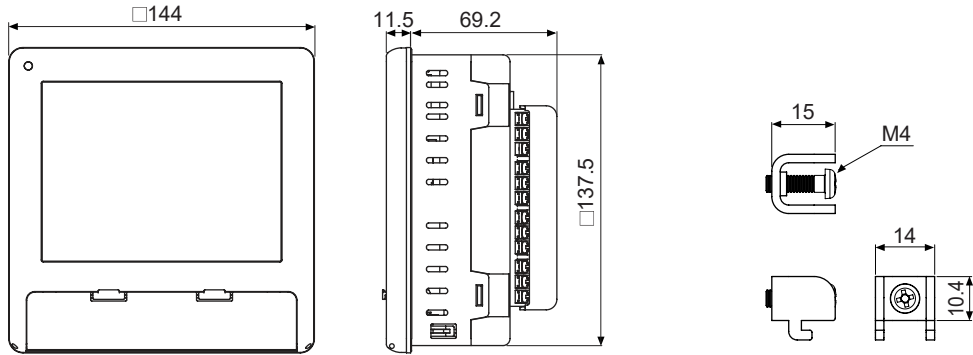
Universal input [※]	Communication output
Option input/output 1	Option input/output 2
<p>Alarm output 8 channels</p>	<p>Alarm output 6 channels + Digital input 2 channels</p>
Option input/output 3	Option input/output 4
<p>Alarm output 6 channels + Power for transmitter output</p>	<p>Alarm output 4 channels + Digital input 2 channels + Power for transmitter output</p>

※ In case of current input, connect 250Ω resistance at external part.

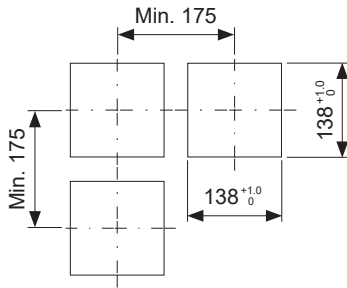
LCD Touchscreen Paperless Recorder

■ Dimensions

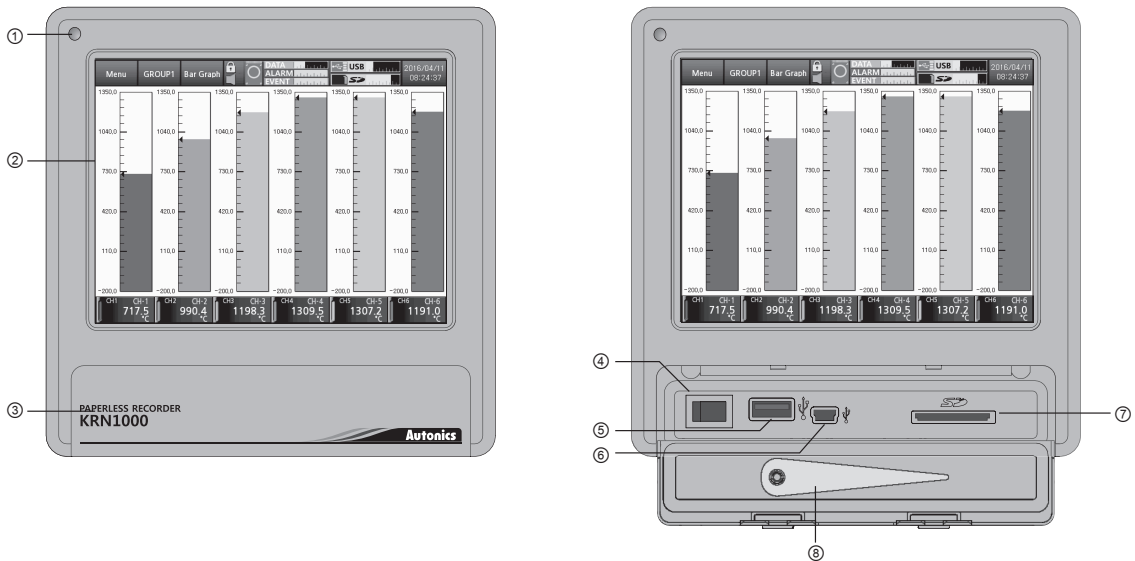
(unit: mm)



• Panel cut-out



■ Unit Descriptions

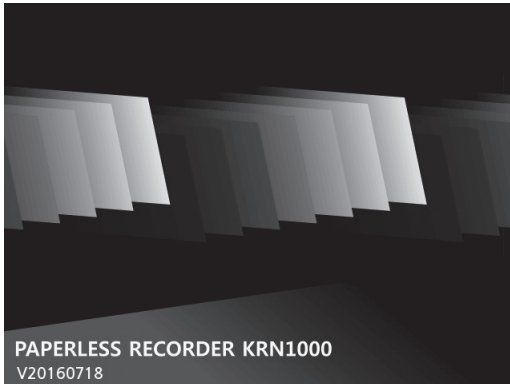


- ① Power indicator: Power turns ON and the red LED turns ON.
- ② Screen (touch panel): Measured value is displayed as trend graph, bar graph, digital figures.
- ③ Front cover: Open the front cover. There are power switch and, USB Host/Device, SD card slot.
- ④ Power switch: Turn ON/OFF the power of KRN1000.
- ⑤ USB host port: Connect the USB memory.
It recognizes up to 32GB. When using extension cable, cable length should be up to 1.5m.
Connect only USB device.
- ⑥ USB device port: Used for connecting PC via Modbus RTU communication.
- ⑦ SD card slot: SD card memory slot. It supports up to 32GB.
- ⑧ Stylus pen: Used for touching screen.

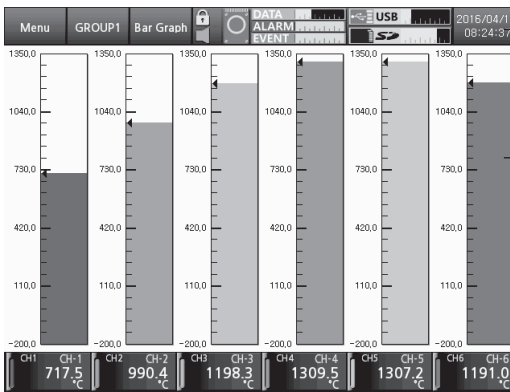
KRN1000 Series

Screen Description

Booting screen



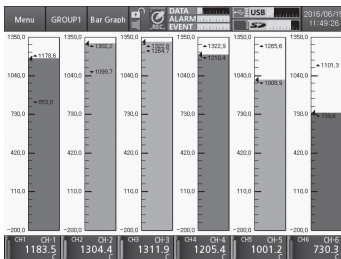
Run screen



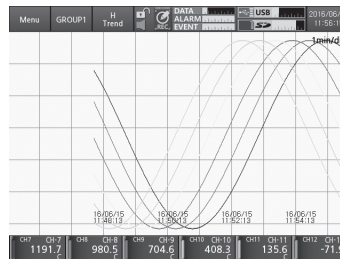
① Status display part
: Status display part appears at top screen.
Touch each icon and it enters the menu.

② Measurement value display part
: Displays the measured value of each channel as graph.
Set one graph among 9 graphs: bar graph, (Vertical/Horizontal) Trend graph, (Vertical/Horizontal) Mixed graph, Divided (Vertical/Horizontal) Trend Graph, (Group/All) Digital.

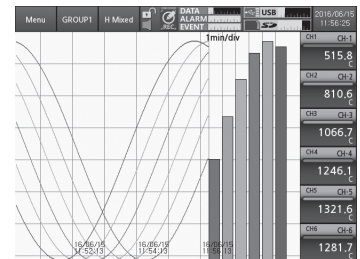
Bar graph



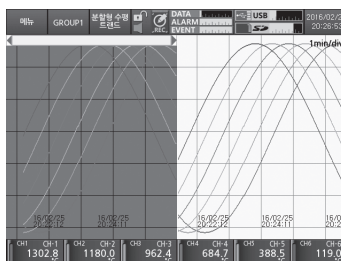
(Vertical/Horizontal) Trend graph



(Vertical/Horizontal) Mixed graph



Divided (Vertical/Horizontal) Trend Graph

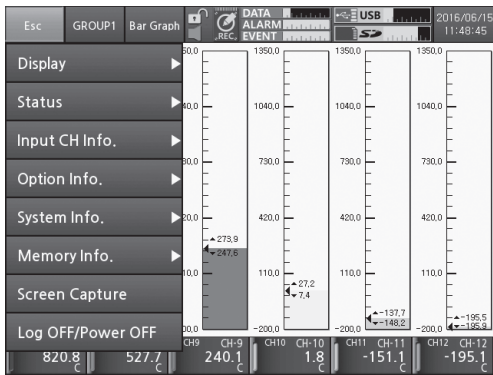


(Group/All) Digital



LCD Touchscreen Paperless Recorder

Menu



Touch the status display part at the upper screen and menu appears as right screen. Menu is as below.

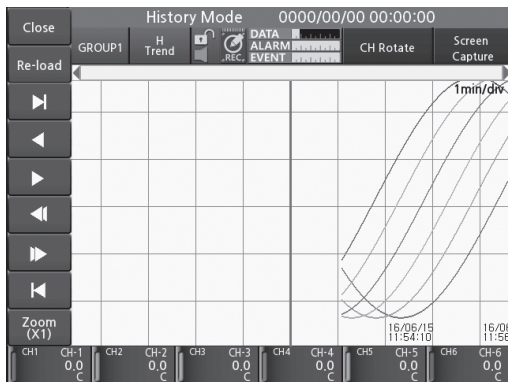
Display	History	System Info.	Date/Time
	File History		Reservation
	Group Setting		Device
	Touch Calibration		File
Status	Alarm List		Log In
	Event List		System Info.
	AO/DI Status	Memory Info.	Memory Management
Input CH Info.	Input/Display		Internal Memory
	Input Option	Screen Capture	
	Alarm	Log OFF/Power OFF	
	User Unit		
Option Info.	Alarm Output		
	Digital Input		
	RS422/485		
	Ethernet/USB		

■ Functions

■ History

It checks data history which is recording at [Menu]-[Display]-[History]. When recording is stop, it displays warning message.

- Checks data history by each group, channel.
- Data history displays as horizontal/vertical trend, divided horizontal/vertical trend.
- Saves the screen as *.bmp file.

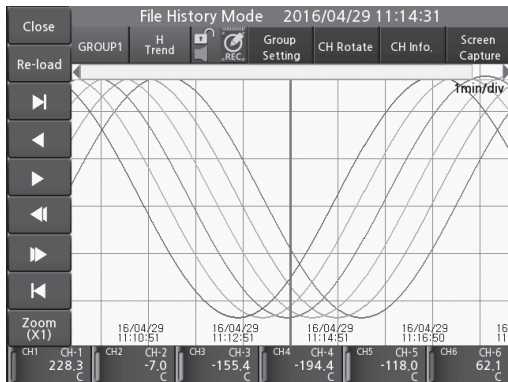


■ File History

It checks the saved data history at internal/external memory.

Touch [Menu]-[Display]-[File History].

- Set the information of display group or channel.
- Data history displays as horizontal/vertical trend, divided horizontal/vertical trend.



■ Special Function

It displays the applied measuring value of the set special function. Depending on Input type, applied special function is different.

- Setting range :
 - When input type is temperature sensor (thermocouple, RTD): None ↔ Difference
 - When input type is analog (voltage, current (shunt)): Linear ↔ Root ↔ Square ↔ Two Unit
- Two Unit is displayed when input type is set as 4-20mA (shunt).

○ Difference (deviation)

It is available to set when input type is temperature sensor (thermocouple, RTD). It displays the deviation of reference channel measuring value.

(Display value = standard channel measuring value - reference channel measuring value)

- The set channel as analog (voltage, current (shunt)) of Input type is not able to set as reference channel.
- If there is no set reference channel, it displays standard channel measuring value.
- If any one of reference channel, or standard channel is break (BURN), high-limit value (HHHH), low-limit value (LLLL) status, it displays as correspond value. If you select the channel which is used Difference function as reference channel, it displays the value based on calculating actual measuring value, not display value of reference channel.

○ Linear

It applies low-limit scale and high-limit scale to low-limit input value and high-limit input value and displays this values.

E.g.) In case low-limit input value: -5V, high-limit input value: +5V and in case low-limit scale: -1000, high-limit scale: 1000, if input value is 2V, display value is 400.

○ Root

In case voltage, current (shunt) input type, this mode is used when input value is calculated by Root ($\sqrt{\quad}$) for the desired display value. Differential pressure signal of differential pressure flow meter is calculated Root ($\sqrt{\quad}$) for the to-be measured flux. This function is used to measure flux by input value.

E.g.) In case low-limit input value: -5V, high-limit input value: +5V and in case low-limit scale: -1000, high-limit scale: 1000, if input value is 2V, display value is approx. 673.32.

○ Square

In case of voltage, current (shunt) input type, this mode is used when input value is calculated by square for the desired display value. Reverse of Root, flux signal is calculated by square for differential pressure signal.

E.g.) In case low-limit range: -5V, high-limit range: +5V and in case low-limit scale: -1000, high-limit scale: 1000, if input value is 2V, display value is -20.

○ Two Unit

For compound pressure, if input pressure is lower than atmospheric pressure (0), it displays the degree of a vacuum with mmHg unit. If input pressure is higher than or same as atmospheric pressure (0), it displays positive pressure with kg/cm^2 unit.

When using Two Unit function, low-limit value is fixed as -760mmHg and kg/cm^2 value is able to set within Setting range 1 to 35.

Two Unit limits scale point as $0 \leftrightarrow 0.0 \leftrightarrow 0.00$. When using Two Unit, display unit is automatically changed as mmHg or kg/cm^2 .

This function has two different unit values and it is impossible to calculate by recording method and digital filter and ignore it.

E.g.) If pressure range is -760mmHg to 3kg/cm^2 , and pressure transmitter outputs 4-20mA, for 4mA input it displays -760mmHg, 8mA input is unit changing point. For 20mA input, it displays 3kg/cm^2 .

LCD Touchscreen Paperless Recorder

■ Functions

■ Reservation

It sets reservation recording time to start and finish recording.

Touch [Menu]-[System Info.]-[Reservation].

Set reservation recording type; repeat, single.

○ Repeat

Records from the start time to end time at every day during start date to end date. If start time is later of end time, it records and saves until end of next day.

○ Single

Records from the start date and time to end date and time.

■ Digital Input

It sets digital input operation mode and status to operate for DI-1/2 input.

Touch [Menu]-[Option Info.]-[Digital Input].

The operation mode and status are as below.

○ DI-□ Type

Set the operation type for digital input.

(None, Rec/Stop, Alarm Reset, Alarm ON, Capture)

○ DI-□ Status

Set digital input operation status.

(only when DI type is set as 'Record/Stop')

- Edge: When supplying digital input over 0.3 sec, the recording starts. When resupplying it, the recording stops.
- Level: When shorting digital input over 0.3 sec, the recording starts. When opening it, the recording stops.

○ Alarm Reset/ON

• Alarm Reset

When DI type is set as 'Alarm Reset', select the desired relay to reset the alarm.

• Alarm ON

When DI type is set as 'Alarm ON', select the desired relay to turn ON the alarm.

■ Summer Time

Set the summer time duration.

Set enable to summer time and designate start date and end date of summer time at [Menu]-[System Info.]-[Date/Time].

■ Screen Capture

It saves current screen as *.bmp file. Set file storage location and file name.

Storage setting range: Internal, SD/USB memory

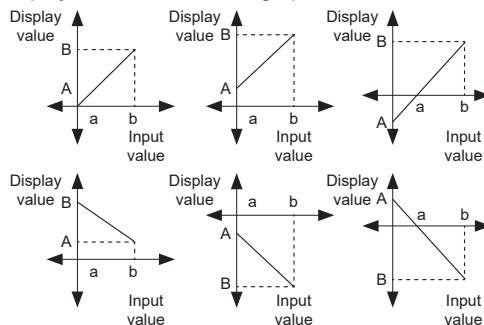
Internal memory saves the set number of screen captures at [Menu]-[Memory Info.]-[Internal Memory].

■ High/Low-Limit Graph Scale Value

In case of temperature sensor input (thermocouple, RTD), set the graph scale value to set the desired record range. Therefore, it helps to record as curve at the desired range.

■ Display Scale

For analog input, this function is to set (-9999.9 to 9999.9) for particular high/low-limit value in order to display high/low-limit value of measurement input. If measurement inputs are 'a' and 'b' and particular values are 'A' and 'B', it will display $a=A$, $b=B$ as below graphs.



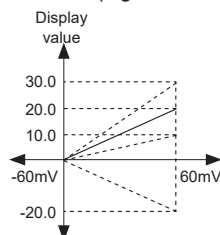
Display scale function is able to change display value for max./min. measured input by setting high-limit scale and low-limit scale.

Set high/low-limit scale at [Menu]-[Input CH Info.]-[Input/Display].

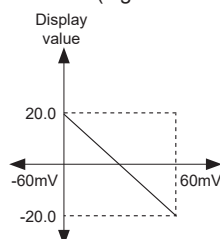
E.g.) Setting high/low-limit scale value

(In case of input type, -60 to +60mV)

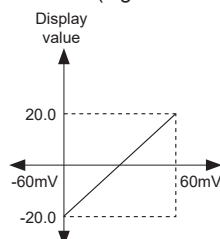
- Low Scale (low-limit scale value) = 0.0
- Hi Scale (high-limit scale value) = 10.0, 20.0, 30.0, -20.0



- Low Scale (low-limit scale value) = 20.0
- Hi Scale (high-limit scale value) = -20.0



- Low Scale (low-limit scale value) = -20.0
- Hi Scale (high-limit scale value) = 20.0



※ When changing input type, high/low-limit scale is changed as factory default display range of the set input type.

KRN1000 Series

■ Functions

■ Internal Memory Info.

It sets number of events, alarms, screen captures, and storage options at internal memory.

It sets also internal memory storage options. When internal memory uses all, it operates overwrite (deletes oldest data) or stop (stops saving).

■ Firmware update

Update firmware.

Download the firmware at our web site (www.autonics.com). Save the downloaded firmware at the top-level folder on USB/SD memory and touch [Menu]-[System Info.]-[System Info.].

When completes firmware update, re-boot the unit.

Do not turn OFF the power during firmware update.

■ Ethernet Communication setting

It sets about Ethernet communications.

Set IP address, subnet mask, default gateway, communication write, Ethernet port, USB communication write, USB device usage.

■ RS422/485 Communication setting

Setting items are only available to check by communication.

RS422/485 communication makes set or monitor parameters at external upper system (PC or graphic panel, etc.) and uses transfer data. It is recommended to use our dedicated software program DAQMaster for monitoring.

If you want to develop monitoring program not using our DAQMaster program or to use the related Modbus program, please refer to user manual for communication.

Visit our homepage (www.autonics.com) to download DAQMaster program, and user manual for communication.

○ Interface

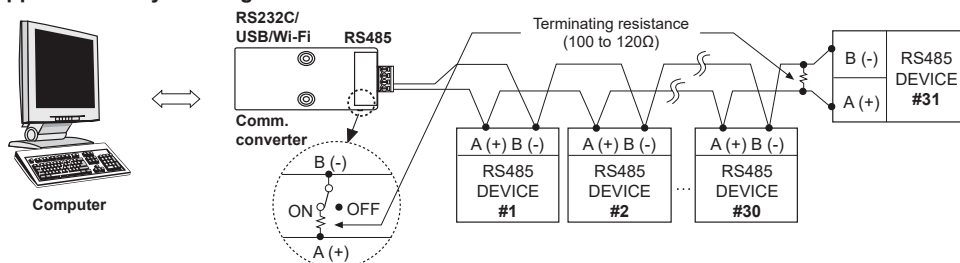
Item	RS485	Ethernet	USB
Application standard	Compliance with EIA RS485	—	Compliance with USB V2.0
Max. connections	31 units (address: 1 to 127)	1 unit (number of occupations per a unit)	1 unit
Com. distance ^{※1}	Within max. 1km (below 9600bps)	Single cable within 100m (recommended over CAT5E)	Single cable within 1.5m
Com. method	Full duplex / Half duplex	Full duplex	—
Com. synchronization method	Asynchronous	Asynchronous	Asynchronous
Com. speed	2400/4800/9600/19200/38400bps	10/100Mbps	12Mbps (full Speed)
Com. response wait time	5 to 99ms	—	—
Start Bit	1-bit (fixed)	—	—
Data Bit	8-bit (fixed)	—	—
Parity Bit	None, Odd, Even	—	—
Stop Bit	1, 2-bit	—	—
Protocol	Modbus RTU	Modbus TCP	Modbus RTU

※1. In case of Ethernet connection, and connecting through the network such as network hub (HUB) and gateway, etc, there is no distance limit, but it is recommended to use min. network. Please use communication cables which is satisfied the below conditions.

- RS422/485 communication: Shield Twist Pair over AWG24, characteristic impedance 100Ω, capacity component 50 pF/m cable length max. 1km
- Ethernet communication: Over CAT5E, cable max. length: 100m
- USB communication: Single cable built-in ferrite core within 1.5m

※USB device is recognized as USB to Serial device and communication speed: 115200bps, start bit: 1-bit, data bit: 8-bit, parity bit: none, stop bit: 1-bit are fixed.

○ Application of system organization



※It is recommended to use Autonics communication converter; SCM-WF48 (Wi-Fi to RS485·USB wireless communication converter, sold separately), SCM-US481 (USB to RS485 converter, sold separately), SCM-381 (RS232C to RS485 converter, sold separately). Please use twisted pair wire, which is suitable for RS485 communication, for SCM-WF48 and SCM-US481.

LCD Touchscreen Paperless Recorder

■ Functions

■ Error

Displays error messages on screen and print data when error occurs.

Message	Description
HHHH	When input type is temperature sensor (Thermocouple, RTD) and the measurement value is higher than high-limit value of input range, it flashes HHHH. It is cleared when the measurement value is within the high-limit range. When input type is analog (voltage, current (shunt)) and the measurement value is over 10% of high-limit input range, it flashes HHHH. It is cleared when the measurement value is within 10% of high-limit input range.
LLLL	When input type is temperature sensor (Thermocouple, RTD) and the measurement value is lower than low-limit value of input range, it flashes LLLL. It is cleared when the measurement value is within the low-limit range. When input type is analog (voltage, current (shunt)) and the measurement value is over 10% of low-limit input range, it flashes LLLL. It is cleared when the measurement value is within 10% of low-limit input range.
BURN	When input type is temperature sensor (Thermocouple, RTD) and input is break, it flashes BURN. It is cleared when input is connected.
ASKey	When forgetting and entering invalid password 3 times, "ASKey" appears with error message. Contact our service center with ASKey.

■ Factory Default

■ Display

○ File History

Menu	Default
History Mode Graph	H Trend
Memory	Internal Memory
File Name	—

○ Group Setting

Parameter	Default	Parameter	Default
CH Rotation Time	5s	Display CH Color	Auto set
Name	GROUP1	Line Thickness	2Pt
No. of CHs	Auto set	Min. Value	-200.0
Background	21 (White)	Max. Value	1350.0
Display CH	Auto set		

■ Input CH Info.

○ Input/Display

Parameter	Default	Parameter	Default
Copy	None	High-Limit Input	Auto set
Tag Name	CH-1	Point	0.0
Input Type	TC-K	Low-Limit Scale	—
Low-Limit Graph Scale	-200.0	Low-Limit Scale	—
High-Limit Graph Scale	1350.0	Display Unit	°C
Low-Limit Input	Auto set		

○ Input Option

Parameter	Default	Parameter	Default
Special Func.	None	Record Method	Instant
Ref. CH	—	Digital Filter	None
Two Unit	—	No. of Digital Filters	1
Input Bias	0.0	Burn-out Mark	None
Span	1.000		

○ Alarm

Parameter	Default	Parameter	Default
Type	PV.Hi	ON Delay	0s
Ref. CH	—	OFF Delay	0s
Option	Normal	Alarm No.	None
Setting Value	1350.0	Save Event	ON
Hys	0.0		

KRN1000 Series

■ Factory Default

■ Option Info.

○ Alarm Output

Parameter	Default	Parameter	Default
Alarm Mark	ON	Alarm Color	(Alarm 1) Red (Alarm 2) Orange (Alarm 3) Light green (Alarm 4) Green
Alarm Mark Type	Flash	Relay output method	(Relay-1 to 6) N.O. (Relay-7 to 8) —

○ Digital Input

Parameter	Default	Parameter	Default
DI-1 Type	None	DI-2 Status	—
DI-2 Type	None	Alarm Reset	(Relay-1 to 8) —
DI-1 Status	—	Alarm ON	(Relay-1 to 8) —

○ RS422/485

Parameter	Default	Parameter	Default
Comm. Address	1	Response Wait Time	20ms
Baud Rate	9600	Protocol	RTU
Parity Bit	None	Comm. Write	Enable
Stop Bit	2 bit	RS422/485 Port	Disable

○ Ethernet/USB

Parameter	Default	Parameter	Default
IP Address	10.0.2.15	Ethernet Port	Disable
Subnet Mask	255.255.255.0	USB Comm. Write	Enable
Default Gateway	10.0.2.2	USB Device	Enable
Comm. Write	Enable		

■ System Info.

○ Date/Time

Parameter	Default	Parameter	Default
Date Setting	Auto set	Summer Time	Disable
Time Setting		Summer Time Duration	1month 1day to 1month 1day
Date Type	yyyy/mm/dd	Time	1 hour

○ Reservation

Parameter	Default	Parameter	Default
Reservation Recording Date	—	Reservation Type	Disable
Reservation Recording Time			

○ Device

Parameter	Default	Parameter	Default
Device Name	KRN1000 Recorder	Backlight	Standard
Language	English	Screen Save	Disable
PWR ON Record	Hold	Alarm Sound	OFF
Sampling	125ms	Touch Sound	Standard
Log Record Speed	1s	Graph Speed	1s

○ File

Parameter	Default	Parameter	Default
Parameter Setting File	None	Screen Simulation (Demo)	Start

○ Log In

Parameter	Default	Parameter	Default
Log In Function	Disable	Input CH Info.	Unlock
Activate Administer Mode	0000	Option Info.	Unlock
Change Password	—	System Info.	Unlock
Display	Unlock	Memory Info.	Unlock
Status	Unlock		

■ Memory Info.

○ Memory Management

Parameter	Default	Parameter	Default
Clear	—	Storage	Internal

○ Internal Memory

Parameter	Default	Parameter	Default
No. of Events	100	No. of Screen Captures	10
No. of Alarms	100	Internal Memory Storage Options	Overwrite

※Shaded parameters are depending on other parameters' SV. Refer to the more information of the parameter.

LCD Touchscreen Paperless Recorder

■ Proper Usage

- Follow instructions in 'Cautions during Use'. Otherwise, it may cause unexpected accidents.
- Install a surge absorber at each end of inductive load coil when controlling high-capacity power relay or inductive load (e.g. magnet).
- 24VDC power supply should be insulated and limited voltage/current or Class 2, SELV power supply device.
- Check the polarity of the terminals before wiring the temperature sensor.
For RTD temperature sensor, wire it as 3-wire type, using cables in same thickness and length.
For thermocouple (CT) temperature sensor, use the designated compensation wire for extending wire.
- Keep away from high voltage lines or power lines to prevent inductive noise.
In case installing power line and input signal line closely, use line filter or varistor at power line and shielded wire at input signal line.
Do not use near the equipment which generates strong magnetic force or high frequency noise.
- Install the unit straightly at the well-ventilated environment with 30mm of separation distance from the wall.
- This unit may be used in the following environments.
 - ①Indoors (in the environment condition rated in 'Specifications')
 - ②Altitude max. 2,000m
 - ③Pollution degree 2
 - ④Installation category II