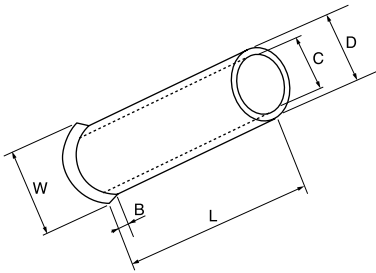
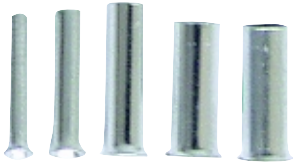
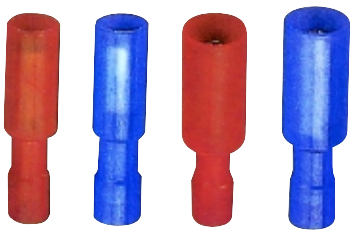


Insulated Ring Shaped Terminal

Specifications

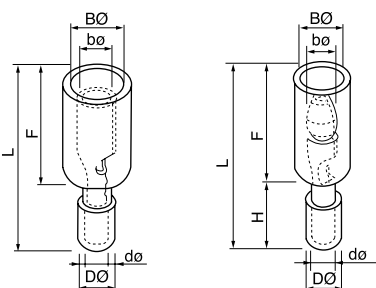


ITEM.NO.	Dimension (mm)					A.W.G	mm ²
	L	D	C	B	W		
EN0506	6.0	1.3	1.0	0.7	2.1	#22	0.5
EN75.6	6.0	1.5	1.2	0.7	2.5	#20	0.75
EN1006	6.0	1.7	1.4	0.7	2.7	#18	1.0
EN1010	10.0						
EN1507	7.0	2.0	1.7	1.0	3.5	#16	1.5
EN1510	10.0						
EN2507	7.0	2.5	2.2	1.0	2.5	#14	2.5
EN2512	12.0						
EN4009	9.0	3.2	2.8	1.0	4.0	#12	4.0
EN4012	12.0						
EN6010	10.0	3.9	3.5	1.0	4.8	#10	6.0
EN6012	12.0						
EN6015	15.0						
EN10-12	12.0	4.9	4.5	1.2	5.8	#7	10.0
EN10-15	15.0						
EN10-18	18.0						
EN16-12	12.0	6.2	5.8	1.5	7.5	#5	16.0
EN16-15	15.0						
EN16-18	18.0						
EN25-16	16.0	7.9	7.5	1.8	9.2	4	25
EN25-22	22.0						
EN35-16	16.0	8.7	8.3	2.0	10	2	35
EN35-25	25.0						
EN50-20	20.0	10.9	1.3	2.0	12.4	1	50
EN50-25	25.0						



Bullet Shaped Male and Female Full-Insulated Terminal

- Max. Current: 22-16A.W.G: 19A 16-14A.W.G: 27A
- Metal: Brass • Insulated Material: Nylon



Item.No.	Dimension(mm)							Fig	A.W.G mm ²	Color
	BØ	bØ	DØ	dØ	L	F	H			
FDFFNY 1.25-156	6.9	6.9	3.2	1.8	26.0	15.0	11.0	1	22-16A.W.G 0.5-1.5mm ²	Red
MPFFNY 1.25-156	7.4	3.9	3.2	1.8	27.5	16.5	11.0	2	22-16A.W.G 0.5-1.5mm ²	Red
FRFFNY 2-156	6.9	4.0	3.9	2.4	26.0	15.5	11.0	1	16-14A.W.G 1.5-2.5mm ²	Blue
MPFFNY 2-156	7.4	4.0	3.9	2.4	27.5	16.5	11.0	2	16-14A.W.G 1.5-2.5mm ²	Blue