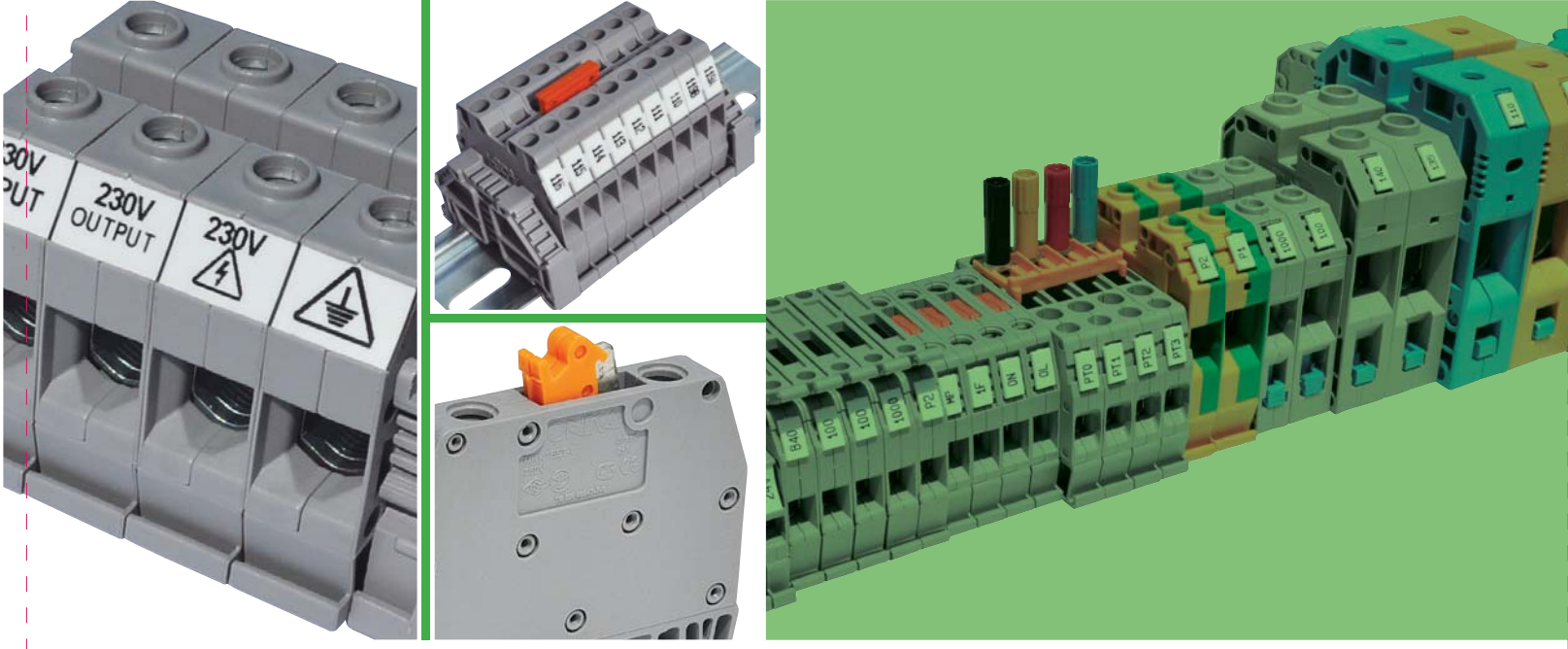




MRK SERIES RAIL TERMINAL BLOCKS

MRK SERİSİ RAY KLEMENSLER



MRK SERIES SCREWED TYPE TERMINAL BLOCKS

Technical Features:

- Does not require final plate (Both sides are closed), provides cost saving and better isolation.
- Symmetrical (Mountable to rail at both directions)
- Provides opportunity to assemble cable section from 0,06 mm² to 120 mm².
- Labelling system appropriate for strap marking.
- Double sided bridging opportunity.
- Isolated comb bridge can be used from 1,5 mm² to 10 mm².
- Screw system is flat headed for sections 35 mm² and lower.
- In 50 mm² and following sections, the screw system is allen headed.
- MRK Series stopper can be used both as group label or end label.

MRK SERİSİ VİDALI RAY KLEMENSLER

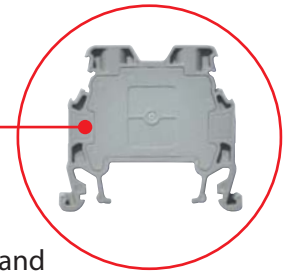
Teknik Özellikler:

- Nihayet plakası gerektirmez (Her iki tarafı kapalı) Maliyet tasarrufu ve daha iyi bir izolasyon sağlar.
- Simetrik (Her iki yönde raya monte edilebilir)
- 0,06 mm² den 240 mm² lik kablo kesitine kadar montaj imkanı sağlar.
- Markalama tırnak yapısı diğer markalara uygun şekilde tasarlanmıştır.
- Şerit markalamaya uygun etiketleme sistemi.
- Çift yönlü köprüleme imkanı.
- 1,5 mm² den 10 mm² ye kadar izoleli tarak köprü kullanılabilir.
- Vida sistemi 1,5 mm² den 35 mm² ye kadar düz başlıdır.
- Vida sistemi 50 mm² ve sonraki kesitlerde alyan başlıdır.
- MRK Serisi durdurucu hem grup etiketi hemde durdurucu olarak kullanılabilir.

MRK SERIES MRK SERİSİ



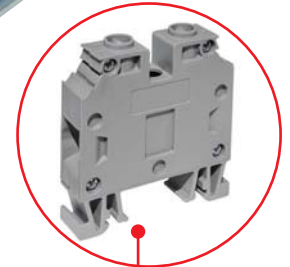
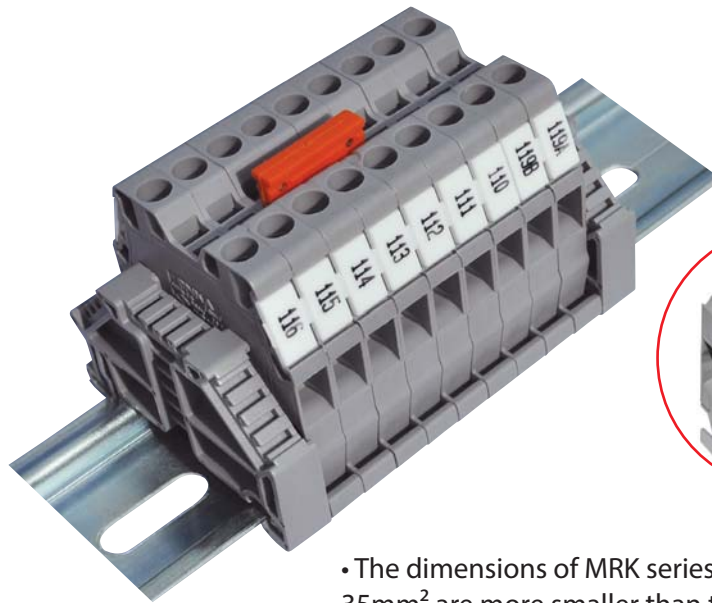
- The roll labelling marking system can be used from 1.5 mm² to 35 mm² in the new MRK series.



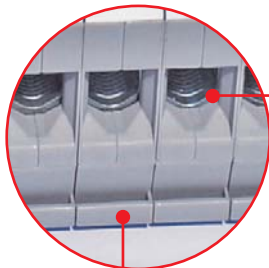
- Main body is monolithic and the end plate is produced as embedded.



- The new fixed bridge system is used in the new MRK series from 1.5 mm² to 10 mm².



- The dimensions of MRK series for 16 mm² and 35mm² are more smaller than the old series. MRK 16 is (51 x 54 x 12) mm , MRK 35 is (51 x 54 x 15) mm.
- Terminal block's body and end plate are connected within 4 steel screw.



- In the case of the U type structured the sleeves can be touched from different points to the cable in the new MRK 6-10-16 and 35mm²

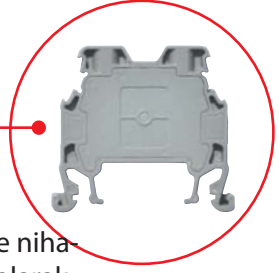
- The foot parts of terminals 16 and 35 mm² can be locked more better because of the same width as the terminal.



- It is produced 1.5-2.5-4-6-10-16-35 mm² in the new MRK series.
- It is new added 1.5 mm² to our product gamma.
- In the case of the copper busbar and the sets made interior of sleeves it is imposible to pull back the cable from the terminal blocks.
- This is the fixed bridge for the MRK 16 and 35 mm²



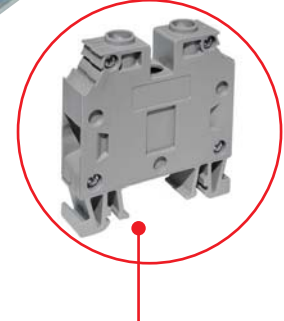
• MRK Serisinde 1.5 mm²den 35 mm² lik kesite kadar şerit etiketleme sistemi uygulanabilmektedir.



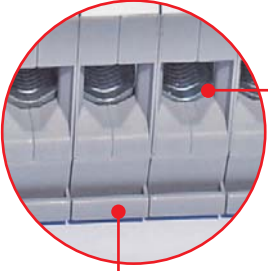
• Ana gövde yekparedir ve nihayet plakası içine gömülü olarak üretilmiştir.



• MRK Serisinde 1.5 mm²den 10 mm² ye kadar yeni üst köprü sistemi kullanılmıştır.

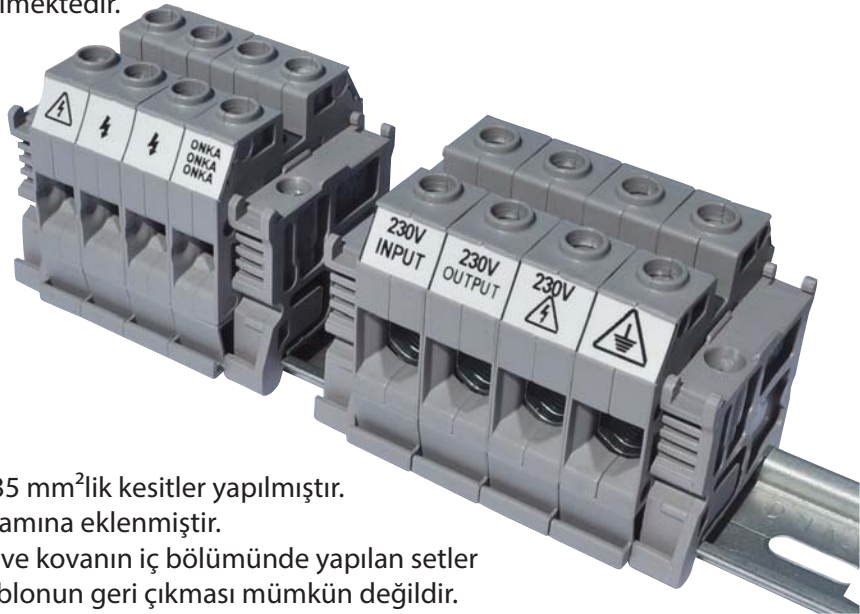


• MRK Serisinde 16 mm² ve 35mm²lik klemenslerin ebatları önceki seriye göre daha ufaktır. MRK 16 (51 x 54 x 12) mm , MRK 35 (51 x 54 x 15) mm ebadındadır.
• MRK 16 ve 35'te klemensin gövdesi ve kapağı birbirine 4 adet çelik vida ile bağlanmıştır. Aynı işlem 50, 70, 95 ve 120mm²'lik klemensler içinde geçerlidir.



• MRK serisinde 6 mm²'den 120 mm²'ye kadar kovan sisteminin alt kısmındaki U şeklinde tasarlanmış yapı sayesinde kovan kabloya daha fazla noktadan temas edebilmektedir.

• MRK 16 ve 35 mm² klemensle raya tutunan ayakların klemens genişliğinde olması sayesinde rayı daha iyi kavramaktadır ve ray üzerine kiletlenmektedir.

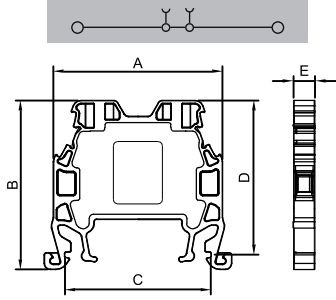


• MRK Serisinde 1.5-2.5-4-6-10-16-35 mm²lik kesitler yapılmıştır.
• MRK Serisinde 1.5 mm² de ürün gamına eklenmiştir.
• Klemensin içerisindeki bakır bara ve kovanın iç bölümünde yapılan setler sayesinde montajı tamamlanan kablonun geri çıkması mümkün değildir.
• MRK 16 ve 35'in köprüleme sistemi vidalı üst köprüdür.

MRK SERIES SCREWED TYPE RAIL TERMINAL BLOCKS MRK SERİSİ VİDALI TİP RAY KLEMENSLER



MRK 1.5
Order No: 1002



Dimensions Ölçüler (mm)	A	B	C	D	E
	40,0	40,0	34,5	36,5	5,1

MATERIAL / MATERYAL

Body / Gövde	PA6.6 V2
Bridge / Köprü	Copper / Bakır
Contact / Kontakt	CK45 Steel / Çelik
Screw / Vida	Steel / Çelik
Temp./ Sıcaklık	-40 °C, +140 °C
Cable Strip L. / Soyma Boyu	10 mm
Torque / Tork	0,4 Nm

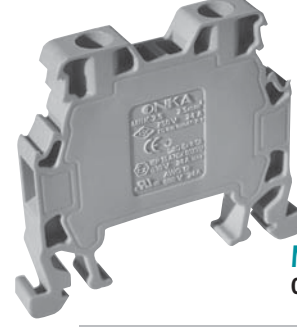
DATA / VERİ	TSE / CE	UL
Voltage / Gerilim	750 V	300 V
Current / Akım	17.5 A	17.5 A
Section / Kesit	1,5 mm ²	14 AWG
Norm	EN-60947-7-1	UL 1059

RENKLER / COLOURS

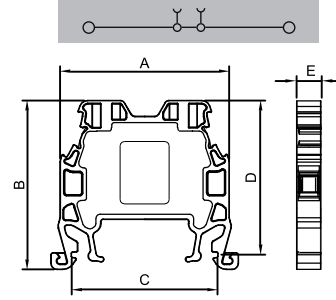
RENK/COLOUR	Order No./ Sip.No.	Pcs./ Ad.
GREY / GRİ	1002	100
CREAM / KREM	1003	100
BLACK / SİYAH	1004	100
BLUE / MAVİ	1005	100
BROWN/K.RENGİ	1006	100
RED / KIRMIZI	1007	100
YELLOW / SARI	1008	100
GREEN / YEŞİL	1009	100

ACCESSORIES / AKSESUARLAR

Cross Connection / Köprü	Order No./ Sip. No.	Section/ Kesit	Pcs./ Ad.
	1920	1,5 / 2	100
	1921	1,5 / 3	100
	1922	1,5 / 4	100
	1923	1,5 / 10	30
	1924	1,5 / 20	20
Stopper / Durdurucu	1202,1222,1212		
Group Sticker/Grup Etiketi	1232		
Marking / Markalama	9770 / 4440 / 4442 / 9540 / 7301		



MRK 2.5
Order No: 1012



Dimensions Ölçüler (mm)	A	B	C	D	E
	40,0	40,0	34,5	36,5	5,9

MATERIAL / MATERYAL

Body / Gövde	PA6.6 V2
Bridge / Köprü	Copper / Bakır
Contact / Kontakt	CK45 Steel
Screw / Vida	Steel / Çelik
Temp./ Sıcaklık	-40 °C, +140 °C
Cable Strip L. / Soyma Boyu	10 mm
Torque / Tork	0,4 Nm

DATA / VERİ	TSE / CE	UL
Voltage / Gerilim	750 V	300 V
Current / Akım	24 A	24 A
Section / Kesit	2,5 mm ²	12 AWG
Norm	EN-60947-7-1	UL 1059

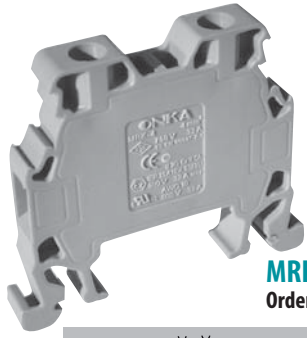
RENKLER / COLOURS

RENK/COLOUR	Order No./ Sip.No.	Pcs./ Ad.
GREY / GRİ	1012	100
CREAM / KREM	1013	100
BLACK / SİYAH	1014	100
BLUE / MAVİ	1015	100
BROWN/K.RENGİ	1016	100
RED / KIRMIZI	1017	100
YELLOW / SARI	1018	100
GREEN / YEŞİL	1019	100

ACCESSORIES / AKSESUARLAR

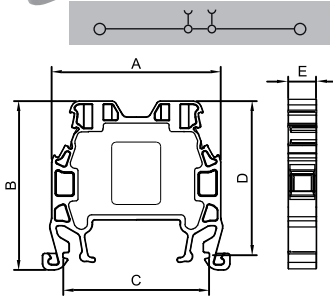
Cross Connection / Köprü	Order No./ Sip. No.	Section/ Kesit	Pcs./ Ad.
	1925	2,5 / 2	100
	1926	2,5 / 3	100
	1927	2,5 / 4	75
	1928	2,5 / 10	30
	1929	2,5 / 20	20
Stopper / Durdurucu	1202,1222,1212		
Group Sticker/Grup Etiketi	1232		
Marking / Markalama	9770 / 4440 / 4442 / 9540 / 7301		

MRK SERIES SCREWED TYPE RAIL TERMINAL BLOCKS MRK SERİSİ VİDALI TİP RAY KLEMENSLER



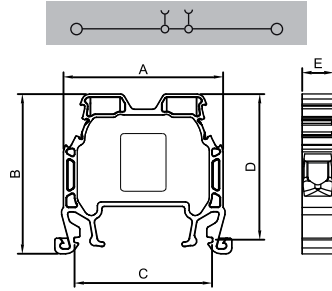
MRK 4

Order No: 1022



MRK 6

Order No: 1032



Dimensions Ölçüler (mm)	A	B	C	D	E
	40,0	40,0	34,5	36,5	6,7

MATERIAL / MATERYAL	
Body / Gövde	PA6.6 V2
Bridge / Köprü	Copper / Bakır
Contact / Kontak	CK45 Steel / Çelik
Screw/ Vida	Steel / Çelik
Temp./ Sıcaklık	-40 °C, +140 °C
Cable Strip L./ Soyma Boyu	10 mm
Torque / Tork	0,5 Nm

DATA / VERİ	TSE / CE	UL
Voltage / Gerilim	750 V	300 V
Current / Akım	32 A	32 A
Section / Kesit	4,0 mm ²	10 AWG
Norm	EN-60947-7-1	UL 1059

RENKLER / COLOURS		
RENK/COLOUR	Order No./ Sip.No.	Pcs. /Ad.
GREY / GRİ	1022	100
CREAM / KREM	1023	100
BLACK / SİYAH	1024	100
BLUE / MAVİ	1025	100
BROWN/K.RENGİ	1026	100
RED / KIRMIZI	1027	100
YELLOW / SARI	1028	100
GREEN / YEŞİL	1029	100

ACCESSORIES / AKSESUARLAR			
Cross Connection / Köprü	Order No./ Sip. No.	Section/ Kesit	Pcs./ Ad.
	1930	4 / 2	100
	1931	4 / 3	100
	1932	4 / 4	50
	1933	4 / 10	30
	1934	4 / 20	20
Stopper / Durdurucu	1202,1222,1212		
Group Sticker/Grup Etiketi	1232		
Marking / Markalama	9770 / 4440 / 4442 / 9540 / 7301		

Dimensions Ölçüler (mm)	A	B	C	D	E
	40,0	40,0	34,5	36,5	8,2

MATERIAL / MATERYAL	
Body / Gövde	PA6.6 V2
Bridge / Köprü	Copper / Bakır
Contact / Kontak	CK45 Steel / Çelik
Screw/ Vida	Steel / Çelik
Temp./ Sıcaklık	-40 °C, +140 °C
Cable Strip L./ Soyma Boyu	12 mm
Torque / Tork	0,8 Nm

DATA / VERİ	TSE / CE	UL
Voltage / Gerilim	750 V	300 V
Current / Akım	41 A	41 A
Section / Kesit	6 mm ²	8 AWG
Norm	EN-60947-7-1	UL 1059

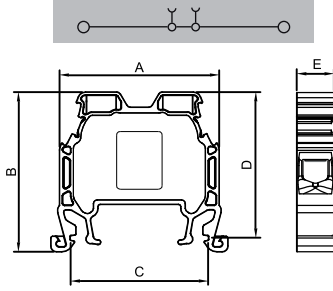
RENKLER / COLOURS		
RENK/COLOUR	Order No./ Sip.No.	Pcs. /Ad.
GREY / GRİ	1032	100
CREAM / KREM	1033	100
BLACK / SİYAH	1034	100
BLUE / MAVİ	1035	100
BROWN/K.RENGİ	1036	100
RED / KIRMIZI	1037	100
YELLOW / SARI	1038	100
GREEN / YEŞİL	1039	100

ACCESSORIES / AKSESUARLAR			
Cross Connection / Köprü	Order No./ Sip. No.	Section/ Kesit	Pcs./ Ad.
	1935	6 / 2	100
	1936	6 / 3	50
	1937	6 / 4	50
	1938	6 / 10	15
	1939	6 / 20	10
Stopper / Durdurucu	1202,1222,1212		
Group Sticker/Grup Etiketi	1232		
Marking / Markalama	9770 / 4440 / 4442 / 9540 / 7301		

MRK SERIES SCREWED TYPE RAIL TERMINAL BLOCKS MRK SERİSİ VİDALI TİP RAY KLEMENSLER



MRK 10
Order No: 1042



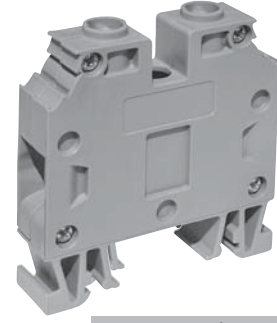
Dimensions Ölçüler (mm)	A	B	C	D	E
	40,0	40,0	34,5	36,5	9,5

MATERIAL / MATERYAL	
Body / Gövde	PA6.6 V2
Bridge / Köprü	Copper / Bakır
Contact / Kontak	CK45 Steel / Çelik
Screw / Vida	Steel / Çelik
Temp./ Sıcaklık	-40 °C, +140 °C
Cable Strip L. / Soyma Boyu	12 mm
Torque / Tork	0,8 Nm

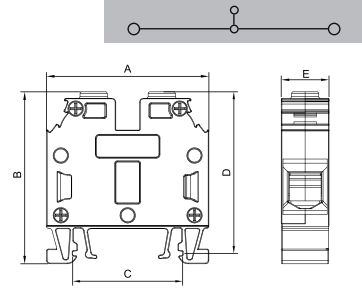
DATA / VERİ	TSE / CE	UL
Voltage / Gerilim	750 V	600 V
Current / Akım	57 A	57 A
Section / Kesit	10 mm ²	8 AWG
Norm	EN-60947-7-1	UL 1059

RENKLER / COLOURS		
RENK / COLOUR	Order No. / Sip.No.	Pcs. / Ad.
GREY / GRİ	1042	100
CREAM / KREM	1043	100
BLACK / SİYAH	1044	100
BLUE / MAVİ	1045	100
BROWN / K.RENGİ	1046	100
RED / KIRMIZI	1047	100
YELLOW / SARI	1048	100
GREEN / YEŞİL	1049	100

ACCESSORIES / AKSESUARLAR			
Cross Connection / Köprü	Order No./ Sip. No.	Section/ Kesit	Pcs./ Ad.
	1940	10 / 2	100
	1941	10 / 3	50
	1942	10 / 4	50
	1943	10 / 10	15
	1944	10 / 20	10
Stopper / Durdurucu	1202,1222,1212		
Group Sticker/Grup Etiketi	1232		
Marking / Markalama	9770 / 4440 / 4442 / 9540 / 7301		



MRK 16
Medium Size
Orta Boy
Order No: 1132



Dimensions Ölçüler (mm)	A	B	C	D	E
	51,0	54,0	34,5	51,0	12,0

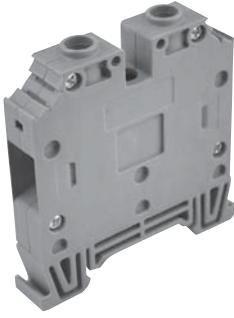
MATERIAL / MATERYAL	
Body / Gövde	PA6.6 V2
Bridge / Köprü	Copper / Bakır
Contact / Kontak	CK45 Steel / Çelik
Screw / Vida	Steel / Çelik
Temp./ Sıcaklık	-40 °C, +140 °C
Cable Strip L. / Soyma Boyu	18 mm
Torque / Tork	2,0 Nm

DATA / VERİ	TSE / CE	UL
Voltage / Gerilim	750 V	600 V
Current / Akım	76 A	63 A
Section / Kesit	16 mm ²	6 AWG
Norm	EN-60947-7-1	UL 1059

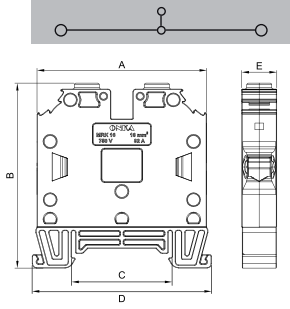
RENKLER / COLOURS		
RENK / COLOUR	Order No. / Sip.No.	Pcs. / Ad.
GREY / GRİ	1132	50
CREAM / KREM	1133	50
BLACK / SİYAH	1134	50
BLUE / MAVİ	1135	50
BROWN / K.RENGİ	1136	50
RED / KIRMIZI	1137	50
YELLOW / SARI	1138	50
GREEN / YEŞİL	1139	50

ACCESSORIES / AKSESUARLAR			
Cross Connection / Köprü	Order No./ Sip. No.	Section/ Kesit	Pcs./ Ad.
	2257	16 / 2	50
	2258	16 / 3	40
	2259	16 / 4	40
	2260	16 / 5	25
	2265	16 / 10	10
	Stopper / Durdurucu	1202,1222,1212	
Group Sticker/Grup Etiketi	1232		
Marking / Markalama	9770 / 4440 / 4442 / 9540 / 7301		

MRK SERIES SCREWED TYPE RAIL TERMINAL BLOCKS MRK SERİSİ VİDALI TİP RAY KLEMENSLER



MRK 16
Order No: 1052



Dimensions Ölçüler (mm)	A	B	C	D	E
	58,0	63,2	34,5	61,2	12,0

MATERIAL / MATERYAL

Body / Gövde	PA6.6 V2
Bridge / Köprü	Copper / Bakır
Contact / Kontak	CK45 Steel / Çelik
Screw / Vida	Steel / Çelik
Temp./ Sıcaklık	-40 °C, +140 °C
Cable Strip L./ Soyma Boyu	18 mm
Torque / Tork	2,0 Nm

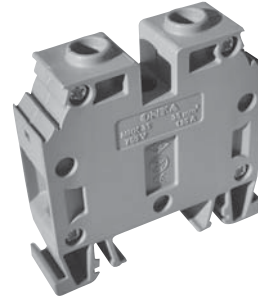
DATA / VERİ	TSE / CE	UL
Voltage / Gerilim	750 V	600 V
Current / Akım	76 A	63 A
Section / Kesit	16 mm ²	6 AWG
Norm	EN-60947-7-1	UL 1059

RENKLER / COLOURS

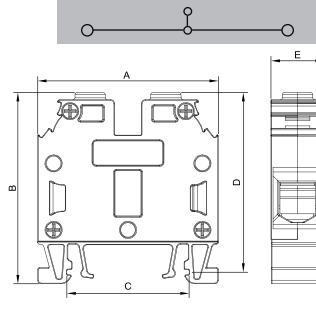
RENK/COLOUR	Order No./ Sip.No.	Pcs. /Ad.
GREY / GRİ	1052	50
CREAM / KREM	1053	50
BLACK / SİYAH	1054	50
BLUE / MAVİ	1055	50
BROWN/K.RENGİ	1056	50
RED / KIRMIZI	1057	50
YELLOW / SARI	1058	50
GREEN / YEŞİL	1059	50

ACCESSORIES / AKSESUARLAR

Cross Connection / Köprü	Order No./ Sip. No.	Section/ Kesit	Pcs./ Ad.
	2257	16 / 2	50
	2258	16 / 3	40
	2259	16 / 4	40
	2260	16 / 5	25
	2265	16 / 10	10
	Stopper / Durdurucu	1202,1222,1212	
Group Sticker/Grup Etiketi	1232		
Marking / Markalama	9770 / 4440 / 4442 / 9540 / 7301		



MRK 35
Medium Size
Orta Boy
Order No: 1142



Dimensions Ölçüler (mm)	A	B	C	D	E
	50,7	54,0	34,5	51,0	15,0

MATERIAL / MATERYAL

Body / Gövde	PA6.6 V2
Bridge / Köprü	Copper / Bakır
Contact / Kontak	CK45 Steel / Çelik
Screw / Vida	Steel / Çelik
Temp./ Sıcaklık	-40 °C, +140 °C
Cable Strip L./ Soyma Boyu	18 mm
Torque / Tork	2,0 Nm

DATA / VERİ	TSE / CE
Voltage / Gerilim	750 V
Current / Akım	125 A
Section / Kesit	35 mm ²
Norm	EN-60947-7-1

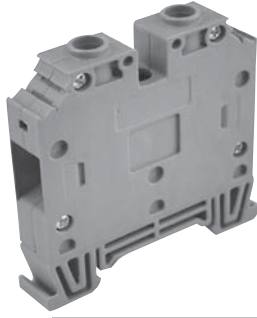
RENKLER / COLOURS

RENK/COLOUR	Order No./ Sip.No.	Pcs. /Ad.
GREY / GRİ	1142	30
CREAM / KREM	1143	30
BLACK / SİYAH	1144	30
BLUE / MAVİ	1145	30
BROWN/K.RENGİ	1146	30
RED / KIRMIZI	1147	30
YELLOW / SARI	1148	30
GREEN / YEŞİL	1149	30

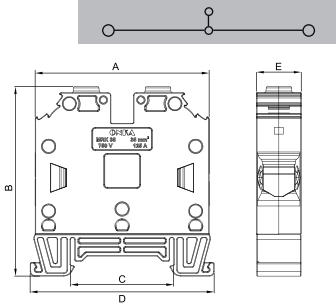
ACCESSORIES / AKSESUARLAR

Cross Connection / Köprü	Order No./ Sip. No.	Section/ Kesit	Pcs./ Ad.
	2266	35 / 2	50
	2267	35 / 3	40
	2268	35 / 4	40
	2269	35 / 5	25
	2274	35 / 10	10
	Stopper / Durdurucu	1202,1222,1212	
Group Sticker/Grup Etiketi	1232		
Marking / Markalama	9770 / 4440 / 4442 / 9540 / 7301		

MRK SERIES SCREWED TYPE RAIL TERMINAL BLOCKS MRK SERİSİ VİDALI TİP RAY KLEMENSLER



MRK 35
Order No: 1062



Dimensions Ölçüler (mm)	A	B	C	D	E
	58,0	63,2	34,5	61,2	15,0

MATERIAL / MATERYAL

Body / Gövde	PA6.6 V2
Bridge / Köprü	Copper / Bakır
Contact / Kontak	CK45 Steel / Çelik
Screw / Vida	Steel / Çelik
Temp./ Sıcaklık	-40 °C, +140 °C
Cable Strip L. / Soyma Boyu	18 mm
Torque / Tork	2,0 Nm

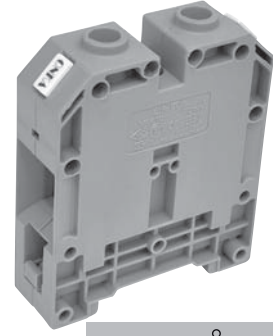
DATA / VERİ	TSE / CE
Voltage / Gerilim	750 V
Current / Akım	125 A
Section / Kesit	35 mm ²
Norm	EN-60947-7-1

RENKLER / COLOURS

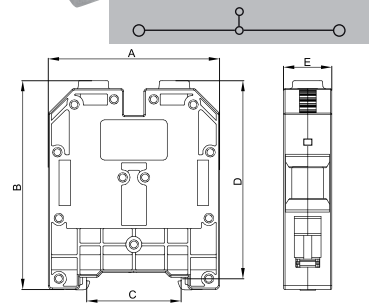
RENK/COLOUR	Order No./ Sip.No.	Pcs./Ad.
GREY / GRİ	1062	30
CREAM / KREM	1063	30
BLACK / SİYAH	1064	30
BLUE / MAVİ	1065	30
BROWN/K.RENGİ	1066	30
RED / KIRMIZI	1067	30
YELLOW / SARI	1068	30
GREEN / YEŞİL	1069	30

ACCESSORIES / AKSESUARLAR

Cross Connection / Köprü	Order No./ Sip. No.	Section/ Kesit	Pcs./ Ad.
	2266	35 / 2	50
	2267	35 / 3	40
	2268	35 / 4	40
	2269	35 / 5	25
	2274	35 / 10	10
Stopper / Durdurucu	1202,1222,1212		
Group Sticker/Grup Etiketi	1232		
Marking / Markalama	9770 / 4440 / 4442 / 9540 / 7301		



MRK 50
Order No: 1072



Dimensions Ölçüler (mm)	A	B	C	D	E
	64,0	78,0	34,5	74,0	18,0

MATERIAL / MATERYAL

Body / Gövde	PA6.6 V2
Bridge / Köprü	Copper / Bakır
Contact / Kontak	DKP
Screw / Vida	Steel / Çelik
Temp./ Sıcaklık	-40 °C, +140 °C
Cable Strip L. / Soyma Boyu	18 mm
Torque / Tork	6,0 Nm

DATA / VERİ	TSE / CE	UL
Voltage / Gerilim	750 V	600 V
Current / Akım	150 A	100 A
Section / Kesit	50 mm ²	AWG 1/O str
Norm	EN-60947-7-1	UL 1059

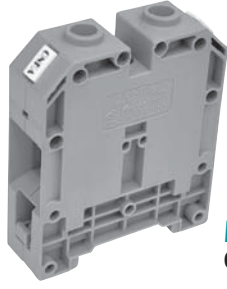
RENKLER / COLOURS

RENK/COLOUR	Order No./ Sip.No.	Pcs./Ad.
GREY / GRİ	1072	20
CREAM / KREM	1073	20
BLACK / SİYAH	1074	20
BLUE / MAVİ	1075	20
BROWN/K.RENGİ	1076	20
RED / KIRMIZI	1077	20
YELLOW / SARI	1078	20
GREEN / YEŞİL	1079	20

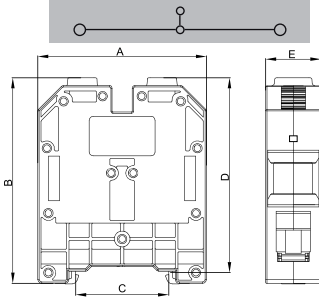
ACCESSORIES / AKSESUARLAR

Stopper / Durdurucu	1202,1222,1212	
Group Sticker/Grup Etiketi	1232	
Marking / Markalama	9770 / 4440 / 4442 / 9540	

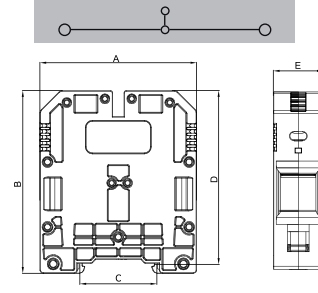
MRK SERIES SCREWED TYPE RAIL TERMINAL BLOCKS MRK SERİSİ VİDALI TİP RAY KLEMENSLER



MRK 70
Order No: 1082



MRK 95
Order No: 1092



Dimensions Ölçüler (mm)	A	B	C	D	E
	64,0	78,0	34,5	74,0	21,0

MATERIAL / MATERYAL	
Body / Gövde	PA6.6 V2
Bridge / Köprü	Copper / Bakır
Contact / Kontak	DKP
Screw/ Vida	Steel / Çelik
Temp./ Sıcaklık	-40 °C, +140 °C
Cable Strip L. / Soyma Boyu	20 mm
Torque / Tork	6,0 Nm

DATA / VERİ	TSE / CE	UL
Voltage / Gerilim	750 V	600 V
Current / Akım	192 A	125 A
Section / Kesit	70 mm ²	AWG 2/O str
Norm	EN-60947-7-1	UL 1059

RENKLER / COLOURS		
RENK/COLOUR	Order No. / Sip.No.	Pcs. /Ad.
GREY / GRİ	1082	20
CREAM / KREM	1083	20
BLACK / SİYAH	1084	20
BLUE / MAVİ	1085	20
BROWN/K.RENGİ	1086	20
RED / KIRMIZI	1087	20
YELLOW / SARI	1088	20
GREEN / YEŞİL	1089	20

ACCESSORIES / AKSESUARLAR	
Stopper / Durdurucu	1202,1222,1212
Group Sticker/Grup Etiketi	1232
Marking / Markalama	9770 / 4440 / 4442 / 9540

Dimensions Ölçüler (mm)	A	B	C	D	E
	75,0	88,0	34,5	83,0	23,8

MATERIAL / MATERYAL	
Body / Gövde	PA6.6 V2
Bridge / Köprü	Copper / Bakır
Contact / Kontak	DKP
Screw/ Vida	Steel / Çelik
Temp./ Sıcaklık	-40 °C, +140 °C
Cable Strip L. / Soyma Boyu	20 mm
Torque / Tork	6,0 Nm

DATA / VERİ	TSE / CE
Voltage / Gerilim	100 V
Current / Akım	232 A
Section / Kesit	95 mm ²
Norm	EN-60947-7-1

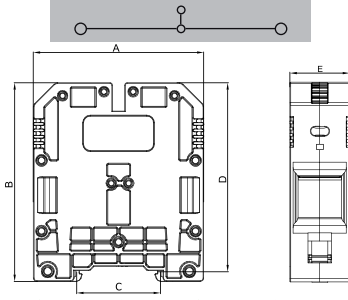
RENKLER / COLOURS		
RENK/COLOUR	Order No. / Sip.No.	Pcs. /Ad.
GREY / GRİ	1092	10
CREAM / KREM	1093	10
BLACK / SİYAH	1094	10
BLUE / MAVİ	1095	10
BROWN/K.RENGİ	1096	10
RED / KIRMIZI	1097	10
YELLOW / SARI	1098	10
GREEN / YEŞİL	1099	10

ACCESSORIES / AKSESUARLAR	
Stopper / Durdurucu	1202,1222,1212
Group Sticker/Grup Etiketi	1232
Marking / Markalama	9770 / 4440 / 4442 / 9540

MRK SERIES SCREWED TYPE RAIL TERMINAL BLOCKS MRK SERİSİ VİDALI TİP RAY KLEMENSLER



MRK 120
Order No: 1102



Dimensions Ölçüler (mm)	A	B	C	D	E
	75,0	88,0	34,5	83,0	26,0

MATERIAL / MATERYAL

Body / Gövde	PA6.6 V2
Bridge / Köprü	Copper / Bakır
Contact / Kontak	DKP
Screw / Vida	Steel / Çelik
Temp./ Sıcaklık	-40 °C, +140 °C
Cable Strip L. / Soyma Boyu	20 mm
Torque / Tork	6,0 Nm

DATA / VERİ	TSE / CE
Voltage / Gerilim	1000 V
Current / Akım	269 A
Section / Kesit	120 mm ²
Norm	EN-60947-7-1

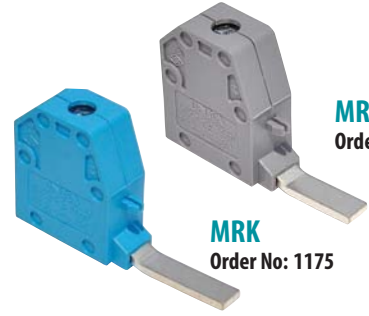
RENKLER / COLOURS

RENK/COLOUR	Order No./ Sip.No.	Pcs./Ad.
GREY / GRİ	1102	10
CREAM / KREM	1103	10
BLACK / SİYAH	1104	10
BLUE / MAVİ	1105	10
BROWN/K.RENGİ	1106	10
RED / KIRMIZI	1107	10
YELLOW / SARI	1108	10
GREEN / YEŞİL	1109	10

ACCESSORIES / AKSESUARLAR

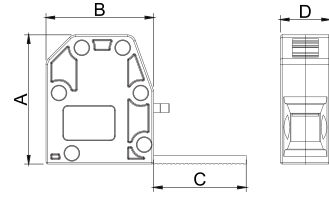
Stopper / Durdurucu	1202,1222,1212
Group Sticker/Grup Etiketi	1232
Marking / Markalama	9770 / 4440 / 4442 / 9540

MRK SERIES TRANSFER CONNECTORS MRK SERİSİ EK ALMA KLEMENSİ



MRK
Order No: 1162

MRK
Order No: 1175



Dimensions Ölçüler (mm)	Code	A	B	C	D
	1162	30	25	18	11,5
	1175	30	25	23	11,5

MATERIAL / MATERYAL

Body / Gövde	PA6.6 V2
Bridge / Köprü	Copper / Bakır
Contact / Kontak	CK45 Steel / Çelik
Screw / Vida	Steel / Çelik
Temp./ Sıcaklık	-40 °C, +140 °C
Cable Strip L. / Soyma Boyu	18 mm
Torque / Tork	2,0 Nm

DATA / VERİ	TSE / CE
Voltage / Gerilim	750 V
Current / Akım	76 A
Section / Kesit	16 mm ²
Norm	EN-60947-7-1

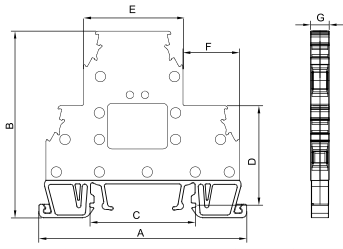
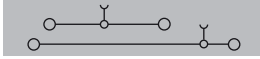
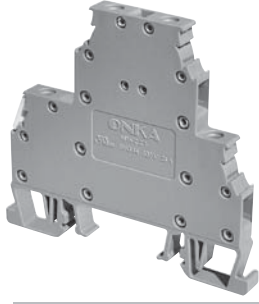
RENKLER / COLOURS

RENK/COLOUR	Order No./ Sip.No.	Pcs./Ad.
GREY / GRİ	1162	100
CREAM / KREM	1163	100
BLACK / SİYAH	1164	100
BLUE / MAVİ	1165	100
BROWN/K.RENGİ	1166	100
RED / KIRMIZI	1167	100
YELLOW / SARI	1168	100
GREEN / YEŞİL	1169	100

ACCESSORIES / AKSESUARLAR

Marking / Markalama	9540
------------------------	------

MRK SERIES SCREWED TYPE DOUBLE RAIL TERMINAL BLOCKS MRK SERİSİ VİDALI TİP ÇİFT KATLI RAY KLEMENSLER



MRK-C 2,5
Order No: 1612

Dimensions Ölçüler (mm)	A	B	C	D	E	F	G
	67,0	61,0	34,5	32,5	32,5	18,0	5,9

MATERIAL / MATERYAL


Body / Gövde	PA6.6 V2
Bridge / Köprü	Copper / Bakır
Contact / Kontak	CK45 Steel
Screw / Vida	Steel / Çelik
Temp./Sıcaklık	-40 °C, +140 °C
Cable Strip L. / Soyma Boyu	9 mm
Torque / Tork	0,4 Nm

DATA / VERİ	TSE / CE	UL
Voltage / Gerilim	500 V	300 V
Current / Akım	24 A	24 A
Section / Kesit	2,5 mm ²	12 AWG
Norm	EN-60947-7-1	UL 1059

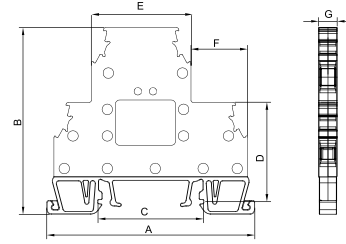
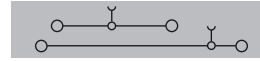
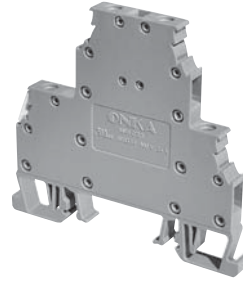
RENKLER / COLOURS

RENK/COLOUR	Order No./Sip.No.	Pcs./Ad.
GREY / GRİ	1612	50
CREAM / KREM	1613	50
BLACK / SİYAH	1614	50
BLUE / MAVİ	1615	50
BROWN/K.RENGİ	1616	50
RED / KIRMIZI	1617	50
YELLOW / SARI	1618	50
GREEN / YEŞİL	1619	50

ACCESSORIES / AKSESUARLAR

Cross Connection / Köprü	Order No./ Sip. No.	Section/ Kesit	Pcs./ Ad.
	1925	2,5 / 2	100
	1926	2,5 / 3	100
	1927	2,5 / 4	75
	1928	2,5 / 10	30
	1929	2,5 / 20	20
	Stopper / Durdurucu	1202,1222,1212	
Group Sticker/Grup Etiketi	1232		
Marking/Markalama	9770 / 4440 / 4442 / 9540 / 7301		
Bridged / Köprülü	1622		
Diode / Diyotlu	1632		
Led / Ledli	1642		

MRK SERIES SCREWED TYPE DOUBLE RAIL TERMINAL BLOCKS MRK SERİSİ VİDALI TİP ÇİFT KATLI RAY KLEMENSLER



MRK-C 4
Order No: 1652

Dimensions Ölçüler (mm)	A	B	C	D	E	F	G
	67,0	61,0	34,5	32,5	32,5	18,0	6,7

MATERIAL / MATERYAL


Body / Gövde	PA6.6 V2
Bridge / Köprü	Copper / Bakır
Contact / Kontak	CK45 Steel
Screw / Vida	Steel / Çelik
Temp./Sıcaklık	-40 °C, +140 °C
Cable Strip L. / Soyma Boyu	9 mm
Torque / Tork	0,5 Nm

DATA / VERİ	TSE / CE	UL
Voltage / Gerilim	500 V	300 V
Current / Akım	32 A	32 A
Section / Kesit	4 mm ²	10 AWG
Norm	EN-60947-7-1	UL 1059

RENKLER / COLOURS

RENK/COLOUR	Order No./Sip.No.	Pcs./Ad.
GREY / GRİ	1652	50
CREAM / KREM	1653	50
BLACK / SİYAH	1654	50
BLUE / MAVİ	1655	50
BROWN/K.RENGİ	1656	50
RED / KIRMIZI	1657	50
YELLOW / SARI	1658	50
GREEN / YEŞİL	1659	50

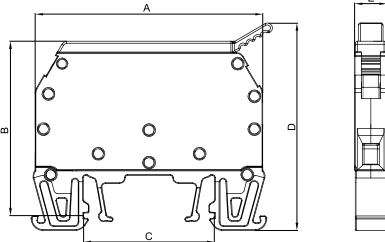
ACCESSORIES / AKSESUARLAR

Cross Connection / Köprü	Order No./ Sip. No.	Section/ Kesit	Pcs./ Ad.
	1930	4 / 2	100
	1931	4 / 3	50
	1932	4 / 4	50
	1933	4 / 10	30
	1934	4 / 20	20
	Stopper / Durdurucu	1202,1222,1212	
Group Sticker/Grup Etiketi	1232		
Marking/Markalama	9770 / 4440 / 4442 / 9540 / 7301		
Bridged / Köprülü	1662		
Diode / Diyotlu	1672		
Led / Ledli	1682		

MRK SERIES SCREWED TYPE FUSED RAIL TERMINAL BLOCKS MRK SERİSİ VİDALI TİP SİGORTALI RAY KLEMENSLER



MRK-S 6
Order No: 1322



Dimensions Ölçüler (mm)	A	B	C	D	E
	60,0	47,0	34,5	54,6	8,8

MATERIAL / MATERYAL

Body / Gövde	PA6.6 V2				
Bridge / Köprü	Copper / Bakır				
Contact / Kontak	CK45 Steel				
Screw/ Vida	Steel / Çelik				
Temp./ Sıcaklık	-40 °C, +140 °C				
Cable Strip L./ Soyma Boyu	10 mm				
Torque / Tork	0,8 Nm				

DATA / VERİ	TSE / CE	UL
Voltage / Gerilim	750 V	600 V
Current / Akım	6,3 A	6,3 A
Section / Kesit	6 mm ²	8 AWG
Norm	EN-60947-7-1	UL 1059

RENKLER / COLOURS

RENK/COLOUR	Order No. / Sip.No.	Pcs. /Ad.
GREY / GRİ	1322	100

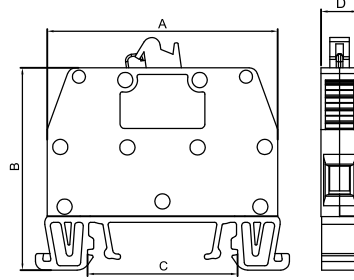
ACCESSORIES / AKSESUARLAR

Types / Tipler	Order No./Sip. No.	Pcs./Ad.
With Busbar	1332	100
24 V AC/DC Led	1352	100
48 V AC/DC Led	1372	100
110 V AC/DC Led	1392	100
220 V AC/DC Led	1402	100
Stopper / Durdurucu	1202,1222,1212	
Group Sticker/Grup Etiketi	1232	
Marking / Markalama	9770 / 4440 / 4442 / 9540	
Glass Fuse / Cam Sigorta	WE-FS-52	

MRK SERIES SCREWED TYPE TEST CONNECTORS MRK SERİSİ VİDALI TİP TEST KLEMENSLERİ



MRK TEST - 6
Order No: 1316



Dimensions Ölçüler (mm)	A	B	C	D
	52,8	46,3	34,5	8,5

MATERIAL / MATERYAL

Body / Gövde	PA6.6 V2			
Bridge / Köprü	Copper / Bakır			
Contact / Kontak	CK45 Steel / Çelik			
Screw/ Vida	Brass / Pirinç			
Temp./ Sıcaklık	-40 °C, +140 °C			
Cable Strip L./ Soyma Boyu	12 mm			
Torque / Tork	0,8 Nm			

DATA / VERİ	TSE / CE	UL
Voltage / Gerilim	750 V	600 V
Current / Akım	41 A	41 A
Section / Kesit	6 mm ²	8 AWG
Norm	EN-60947-7-1	UL 1059

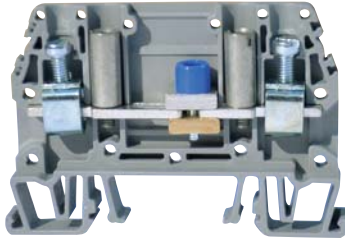
RENKLER / COLOURS

RENK/COLOUR	Order No. / Sip.No.	Pcs. /Ad.
GREY / GRİ	1316	100
BEIGE / BEJ	1317	100

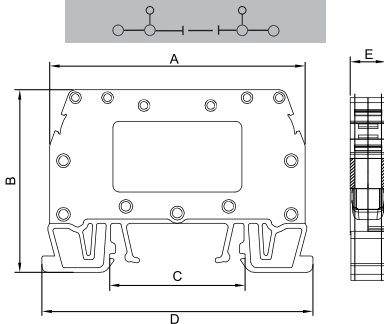
ACCESSORIES / AKSESUARLAR

Stopper / Durdurucu	1202,1222,1212
Group Sticker/Grup Etiketi	1232
Marking / Markalama	9770 / 4440 / 4442 / 9540

MRK SERIES SCREWED TYPE TEST CONNECTORS MRK SERİSİ VİDALI TİP TEST KLEMENSLERİ



MRK TEST - 10
Double Expulsive
Çift Kovanlı
Order No: 1312



Dimensions Ölçüler (mm)	A	B	C	D	E
	65,0	46,5	34,5	68,0	9,1

MATERIAL / MATERYAL	
Body / Gövde	PA6.6 V2
Bridge / Köprü	Copper / Bakır
Contact / Kontak	CK45 Steel / Çelik
Screw / Vida	Steel / Çelik
Temp./ Sıcaklık	-40 °C, +140 °C
Cable Strip L. / Soyma Boyu	12 mm
Torque / Tork	0,8 Nm

DATA / VERİ	TSE / CE	UL
Voltage / Gerilim	750 V	600 V
Current / Akım	57 A	50 A
Section / Kesit	10 mm ²	8 AWG
Norm	EN-60947-7-1	UL 1059

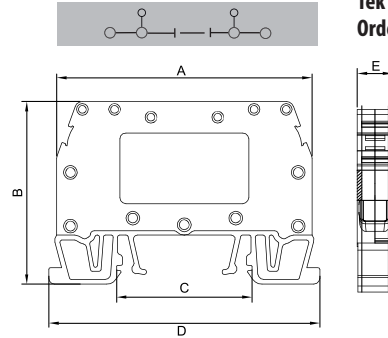
RENKLER / COLOURS		
RENK/COLOUR	Order No. / Sip.No.	Pcs. / Ad.
BEIGE / BEJ	1315	75

ACCESSORIES / AKSESUARLAR		
Types / Tipler	Order No./Sip. No.	Pcs./ Ad.
Without Expulsive/ Kovansız	1313	75
Single Expulsive / Tek Kovanlı	1314	75
Single Test / Tek Test Kovanlı	1306	75
Double Test /Çift Test Kovanlı	1308	75
4 Poles Test Con. Set /4'lü Test Set	1305	100
Upper Bridge 2 Poles /2'li Üst Köprü	1303	100
Upper Bridge 4 Poles /4'li Üst Köprü	1318	50
Upper Bridge 8 Poles / 8'li Üst Köprü	1302	50
Testing Screw /Test Kovanı	1319	50
Stopper / Durdurucu	1202,1222,1212	
Group Sticker / Grup Etiketi	1232	
Marking / Markalama	9770 / 4440 / 4442 / 9540	

MRK SERIES SCREWED TYPE TEST CONNECTORS MRK SERİSİ VİDALI TİP TEST KLEMENSLERİ



MRK TEST - 10
Single Test
Tek Test Kovanlı
Order No: 1306



Dimensions Ölçüler (mm)	A	B	C	D	E
	65,0	46,5	34,5	69,0	9,0

MATERIAL / MATERYAL	
Body / Gövde	PA6.6 V2
Bridge / Köprü	Copper / Bakır
Contact / Kontak	CK45 Steel / Çelik
Screw / Vida	Steel / Çelik
Temp./ Sıcaklık	-40 °C, +140 °C
Cable Strip L. / Soyma Boyu	12 mm
Torque / Tork	0,8 Nm

DATA / VERİ	TSE / CE	UL
Voltage / Gerilim	750 V	600 V
Current / Akım	57 A	50 A
Section / Kesit	10 mm ²	8 AWG
Norm	EN-60947-7-1	UL 1059

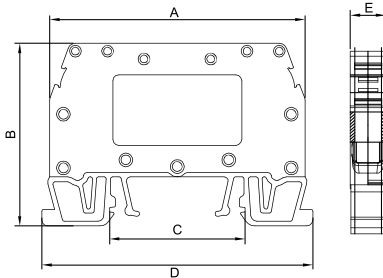
RENKLER / COLOURS		
RENK/COLOUR	Order No. / Sip.No.	Pcs. / Ad.
BEIGE / BEJ	1307	75

ACCESSORIES / AKSESUARLAR		
Types / Tipler	Order No./Sip. No.	Pcs./ Ad.
Without Expulsive/ Kovansız	1313	75
Single Expulsive / Tek Kovanlı	1314	75
Double Expulsive / Çift Kovanlı	1312	75
Double Test /Çift Test Kovanlı	1308	75
4 Poles Test Con. Set /4'lü Test Set	1305	100
Upper Bridge 2 Poles /2'li Üst Köprü	1303	100
Upper Bridge 4 Poles /4'li Üst Köprü	1318	50
Upper Bridge 8 Poles / 8'li Üst Köprü	1302	50
Testing Screw /Test Kovanı	1319	50
Stopper / Durdurucu	1202,1222,1212	
Group Sticker / Grup Etiketi	1232	
Marking / Markalama	9770 / 4440 / 4442 / 9540	

MRK SERIES SCREWED TYPE TEST CONNECTORS MRK SERİSİ VİDALI TİP TEST KLEMENSLERİ



MRK TEST - 10
Double Test
Çift Test Kovanlı
Order No: 1308



Dimensions Ölçüler (mm)	A	B	C	D	E
	65,0	46,5	34,5	69,0	9,0

MATERIAL / MATERYAL

Body / Gövde	PA6.6 V2
Bridge / Köprü	Copper / Bakır
Contact / Kontak	CK45 Steel / Çelik
Screw / Vida	Steel / Çelik
Temp./ Sıcaklık	-40 °C, +140 °C
Cable Strip L. / Soyma Boyu	12 mm
Torque / Tork	0,8 Nm

DATA / VERİ	TSE / CE	UL
Voltage / Gerilim	750 V	600 V
Current / Akım	57 A	50 A
Section / Kesit	10 mm ²	8 AWG
Norm	EN-60947-7-1	UL 1059

RENKLER / COLOURS

RENK/COLOUR	Order No. / Sip.No.	Pcs. / Ad.
BEIGE / BEJ	1309	75

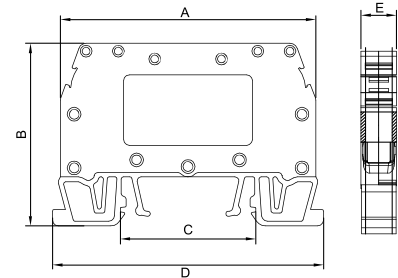
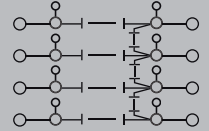
ACCESSORIES / AKSESUARLAR

Types / Tipler	Order No./Sip. No.	Pcs./ Ad.
Without Expulsive / Kovansız	1313	75
Single Expulsive / Tek Kovanlı	1314	75
Double Expulsive / Çift Kovanlı	1312	75
Single Test / Tek Test Kovanlı	1306	75
4 Poles Test Con. Set / 4'lü Test Set	1305	100
Upper Bridge 2 Poles / 2'li Üst Köprü	1303	100
Upper Bridge 4 Poles / 4'lü Üst Köprü	1318	50
Upper Bridge 8 Poles / 8'li Üst Köprü	1302	50
Testing Screw / Test Kovanı	1319	50
Stopper / Durdurucu	1202,1222,1212	
Group Sticker / Grup Etiketli	1232	
Marking / Markalama	9770 / 4440 / 4442 / 9540	

MRK SERIES SCREWED TYPE TEST CONNECTORS MRK SERİSİ VİDALI TİP TEST KLEMENSLERİ



MRK TEST - 10
4 Poles Test Con. Set
4'lü Test Set
Order No: 1305



Dimensions Ölçüler (mm)	A	B	C	D	E
	65,0	46,5	34,5	69,0	9,0

MATERIAL / MATERYAL

Body / Gövde	PA6.6 V2
Bridge / Köprü	Copper / Bakır
Contact / Kontak	CK45 Steel / Çelik
Screw / Vida	Steel / Çelik
Temp./ Sıcaklık	-40 °C, +140 °C
Cable Strip L. / Soyma Boyu	12 mm
Torque / Tork	0,8 Nm

DATA / VERİ	TSE / CE	UL
Voltage / Gerilim	750 V	600 V
Current / Akım	57 A	50 A
Section / Kesit	10 mm ²	8 AWG
Norm	EN-60947-7-1	UL 1059

ACCESSORIES / AKSESUARLAR

Types / Tipler	Order No./Sip. No.	Pcs./ Ad.
Without Expulsive / Kovansız	1313	75
Single Expulsive / Tek Kovanlı	1314	75
Double Expulsive / Çift Kovanlı	1312	75
Single Test / Tek Test Kovanlı	1306	75
Double Test / Çift Test Kovanlı	1308	75
Upper Bridge 2 Poles / 2'li Üst Köprü	1303	100
Upper Bridge 4 Poles / 4'lü Üst Köprü	1318	50
Upper Bridge 8 Poles / 8'li Üst Köprü	1302	50
Testing Screw / Test Kovanı	1319	50
Stopper / Durdurucu	1202,1222,1212	
Group Sticker / Grup Etiketli	1232	
Marking / Markalama	9770 / 4440 / 4442 / 9540	

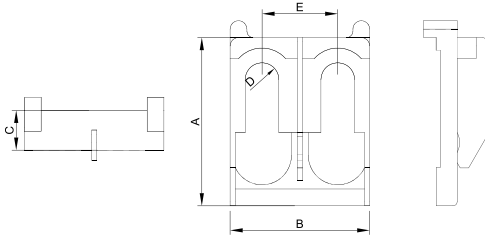
MRK SCREWED TEST CONNECTOR ACCESSORIES MRK TEST KLEMENSİ AKSESUARI



Upper Bridge for Testing
Connectors, 2 Poles
Order No: 1303



Upper Bridge for Testing
Connectors, 4 Poles
Order No: 1318



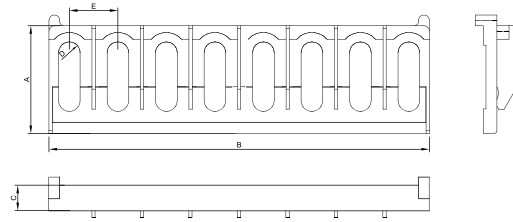
Dimensions Ölçüler (mm)	A	B	C	D	E
1303	22,0	22,0	4,7	4,0	9,0
1318	22,0	34,6	4,7	4,0	9,0

MATERIAL / MATERYAL	
Body / Gövde	PA6.6 V2
Temp./ Sıcaklık	-40 °C, +140 °C
Metal Leg / Metal Ayak	Brass / Pirinç

MRK SCREWED TEST CONNECTOR ACCESSORIES MRK TEST KLEMENSİ AKSESUARI



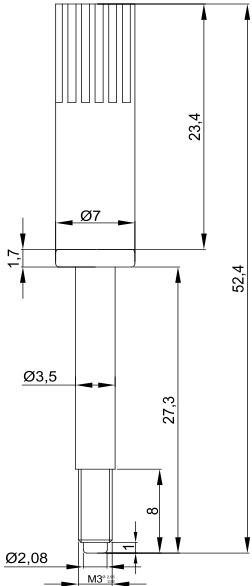
Upper Bridge for Testing
Connectors, 8 Poles
Order No: 1302



Dimensions Ölçüler (mm)	A	B	C	D	E
	22,0	71,0	4,7	4,0	9,0

MATERIAL / MATERYAL	
Body / Gövde	PA6.6 V2
Temp./ Sıcaklık	-40 °C, +140 °C
Metal Leg / Metal Ayak	Brass / Pirinç

MRK SCREWED TEST CONNECTOR ACCESSORIES MRK TEST KLEMENSİ AKSESUARI

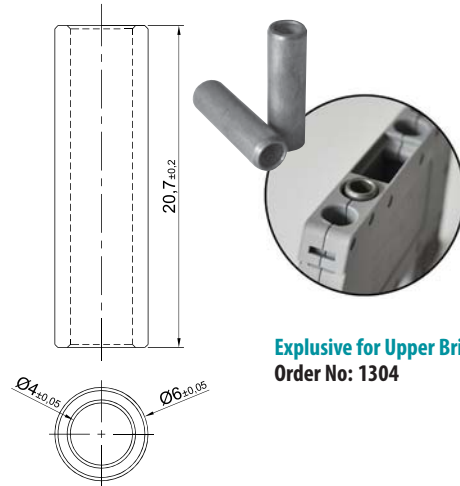


Testing Screw
Order No: 1319



MATERIAL / MATERYAL	
Body / Gövde	PA6.6 V2
Screw/ Vida	Brass / Pirinç
Temp./ Sıcaklık	-40 °C, +140 °C

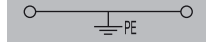
MRK SCREWED TEST CONNECTOR ACCESSORIES MRK TEST KLEMENSİ AKSESUARI



Explosive for Upper Bridge
Order No: 1304

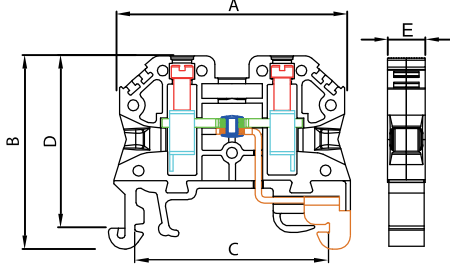
MATERIAL / MATERYAL	
Body / Gövde	Brass / Pirinç

MRK SERIES SCREWED EARTH RAIL TERMINAL BLOCKS MRK SERİSİ VİDALI TİP TOPRAKLAMA KLEMENSLERİ



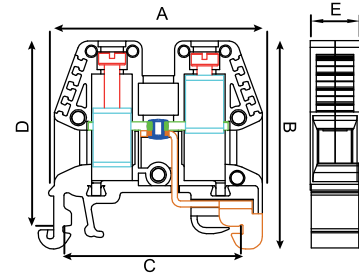
MTK 4

Order No: 1293



MTK 10

Order No: 1294



Dimensions Ölçüler (mm)	A	B	C	D	E
	40,5	35,0	34,5	31,2	7,0

MATERIAL / MATERYAL	
Body / Gövde	PA6.6 V2
Bridge / Köprü	Copper / Bakır
Contact / Kontak	CK45 Steel / Çelik
Screw / Vida	Steel / Çelik
The Foot Which Contact to the Rail / Raya Temas eden Ayak	Brass / Pirinç
Temp./ Sıcaklık	-40 °C, +140 °C
Cable Strip L. / Soyma Boyu	9 mm
Torque / Tork	0,5 Nm

DATA / VERİ	TSE / CE	UL
Voltage / Gerilim	750 V	300 V
Section / Kesit	4,0 mm ²	10 AWG
Norm	EN-60947-7-1	UL 1059

ACCESSORIES / AKSESUARLAR	
Stopper / Durdurucu	1202,1222,1212
Group Sticker/Grup Etiketi	1232
Marking / Markalama	9770 / 4440 / 4442 / 9540

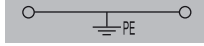
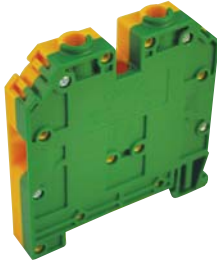
Dimensions Ölçüler (mm)	A	B	C	D	E
	40,5	40,5	34,5	37,5	9,7

MATERIAL / MATERYAL	
Body / Gövde	PA6.6 V2
Bridge / Köprü	Copper / Bakır
Contact / Kontak	CK45 Steel / Çelik
Screw / Vida	Steel / Çelik
The Foot Which Contact to the Rail / Raya Temas eden Ayak	Brass / Pirinç
Temp./ Sıcaklık	-40 °C, +140 °C
Cable Strip L. / Soyma Boyu	10 mm
Torque / Tork	0,8 Nm

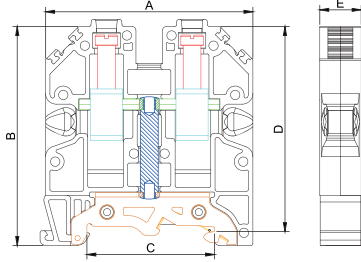
DATA / VERİ	TSE / CE	UL
Voltage / Gerilim	750 V	600 V
Section / Kesit	10 mm ²	8 AWG
Norm	EN-60947-7-1	UL 1059

ACCESSORIES / AKSESUARLAR	
Stopper / Durdurucu	1202,1222,1212
Group Sticker/Grup Etiketi	1232
Marking / Markalama	9770 / 4440 / 4442 / 9540

MRK SERIES SCREWED EARTH RAIL TERMINAL BLOCKS MRK SERİSİ VİDALI TİP TOPRAKLAMA KLEMENSLERİ



MTK 16
Order No: 1295



Dimensions Ölçüler (mm)	A	B	C	D	E
	58,2	63,5	34,5	57,0	11,6

MATERIAL / MATERYAL

Body / Gövde	PA6.6 V2				
Bridge / Köprü	Copper / Bakır				
Contact / Kontak	CK45 Steel / Çelik				
Screw/ Vida	Steel / Çelik				
The Foot Which Contact to the Rail/ Raya Temas eden Ayak	Brass / Pirinç				
Temp./ Sıcaklık	-40 °C, +140 °C				
Cable Strip L. / Soyma Boyu	16 mm				
Torque / Tork	1,2 Nm				

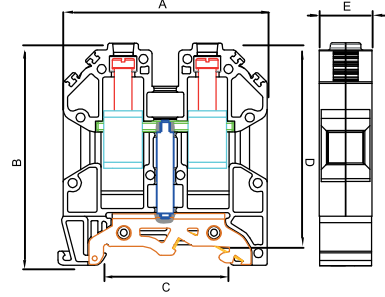
DATA / VERİ	TSE / CE	UL
Voltage / Gerilim	750 V	600 V
Section / Kesit	16 mm ²	6 AWG
Norm	EN-60947-7-1	UL 1059

ACCESSORIES / AKSESUARLAR

Stopper / Durdurucu	1202,1222,1212
Group Sticker/Grup Etiketi	1232
Marking / Markalama	9770 / 4440 / 4442 / 9540



MTK 35
Order No: 1296



Dimensions Ölçüler (mm)	A	B	C	D	E
	58,2	63,5	34,5	57,0	14,9

MATERIAL / MATERYAL

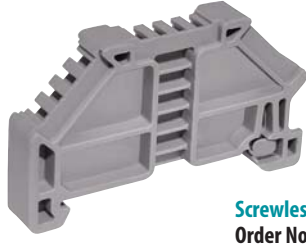
Body / Gövde	PA6.6 V2				
Bridge / Köprü	Copper / Bakır				
Contact / Kontak	CK45 Steel / Çelik				
Screw/ Vida	Steel / Çelik				
The Foot Which Contact to the Rail/ Raya Temas eden Ayak	Brass / Pirinç				
Temp./ Sıcaklık	-40 °C, +140 °C				
Cable Strip L. / Soyma Boyu	16 mm				
Torque / Tork	1,2 Nm				

DATA / VERİ	TSE / CE
Voltage / Gerilim	750 V
Section / Kesit	35 mm ²
Norm	EN-60947-7-1

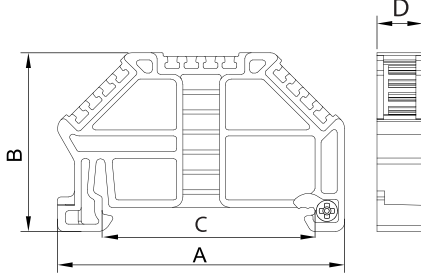
ACCESSORIES / AKSESUARLAR

Stopper / Durdurucu	1202,1222,1212
Group Sticker/Grup Etiketi	1232
Marking / Markalama	9770 / 4440 / 4442 / 9540

MRK AND OPK SERIES SCREWLESS STOPPER MRK VE OPK SERİSİ VİDASIZ DURDURUCU



Screwless Stopper
Order No: 1202

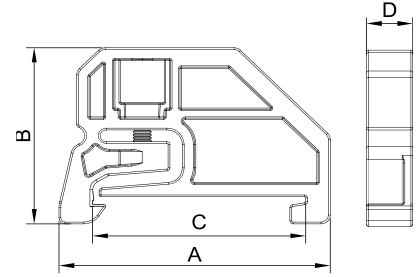


Dimensions Ölçüler (mm)	A	B	C	D
	47,4	29,5	34,5	7,5
MATERIAL / MATERYAL				
Body / Gövde	PA6.6 V2			
Temp./ Sıcaklık	-40 °C, +140 °C			
Metal Leg / Metal Ayak	Steel / Çelik			
ACCESSORIES / AKSESUARLAR				
Marking / Markalama	9770 / 4440 / 4442			

MRK AND OPK SERIES MINI STOPPER MRK VE OPK SERİSİ MİNİ DURDURUCU



Mini Stopper
Order No: 1222

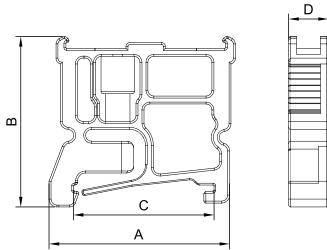


Dimensions Ölçüler (mm)	A	B	C	D
	43,0	30,0	34,5	7,5
MATERIAL / MATERYAL				
Body / Gövde	PA6.6 V2			
Screw/Vida	Steel / Çelik			
Temp./ Sıcaklık	-40 °C, +140 °C			
ACCESSORIES / AKSESUARLAR				
Marking / Markalama	9770 / 4440 / 4442			

MRK AND OPK SERIES BIG STOPPER MRK VE OPK SERİSİ BÜYÜK BOY DURDURUCU



Big Stopper
Order No: 1212

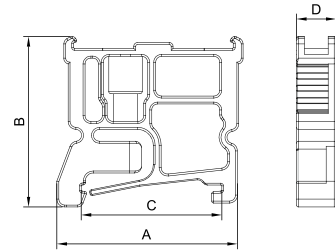


Dimensions Ölçüler (mm)	A	B	C	D
	44,6	43,5	34,5	9,8
MATERIAL / MATERYAL				
Body / Gövde	PA6.6 V2			
Screw/Vida	Steel / Çelik			
Temp./ Sıcaklık	-40 °C, +140 °C			
ACCESSORIES / AKSESUARLAR				
Marking / Markalama	9770 / 4440 / 4442			

MRK AND OPK SERIES STOPPER WITH GROUP STICKER MRK VE OPK SERİSİ GRUP ETİKETLİ DURDURUCU



Stopper With Group Sticker
Order No: 1232



Dimensions Ölçüler (mm)	A	B	C	D
	44,6	43,5	34,5	9,8
MATERIAL / MATERYAL				
Body / Gövde	PA6.6 V2			
Screw/Vida	Steel / Çelik			
Temp./ Sıcaklık	-40 °C, +140 °C			
ACCESSORIES / AKSESUARLAR				
Marking / Markalama	9770 / 4440 / 4442			

MRK TYPE CROSS CONNECTIONS MRK SERİSİ RAY KLEMENS ÜST KÖPRÜ (GEÇMELİ VE VİDALI)

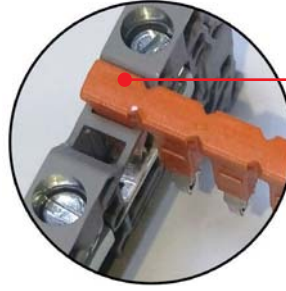
MATERIAL / MATERYAL	
Isolation / İzolasyon	PA 6.6 V2
Body / Gövde	Brass / Pirinç
Covering / Kaplama	Tin / Kalay

Note: All 2,5mm² and 4mm² cross connections can be both used for MRK and OPK Series.

Not: MRK ve OPK serisinde 2,5mm² ve 4mm²'lik üst köprülerin tamamı her iki seride de kullanılmaktadır.

COLOUR/ RENK	CODE KOD	TYPE CİNSİ	BOX K./ AD.
Orange	ONKA-1920	1.5 x 2	100
Orange	ONKA-1921	1.5 x 3	100
Orange	ONKA-1922	1.5 x 4	100
Orange	ONKA-1923	1.5 x 10	30
Orange	ONKA-1924	1.5 x 20	20
Orange	ONKA-1925	2.5 x 2	100
Orange	ONKA-1926	2.5 x 3	100
Orange	ONKA-1927	2.5 x 4	75
Orange	ONKA-1928	2.5 x 10	30
Orange	ONKA-1929	2.5 x 20	20
Orange	ONKA-1930	4 x 2	100
Orange	ONKA-1931	4 x 3	50
Orange	ONKA-1932	4 x 4	50
Orange	ONKA-1933	4 x 10	30
Orange	ONKA-1934	4 x 20	20
Orange	ONKA-1935	6 x 2	100
Orange	ONKA-1936	6 x 3	50
Orange	ONKA-1937	6 x 4	50
Orange	ONKA-1938	6 x 10	15
Orange	ONKA-1939	6 x 20	10
Orange	ONKA-1940	10 x 2	100
Orange	ONKA-1941	10 x 3	50
Orange	ONKA-1942	10 x 4	50
Orange	ONKA-1943	10 x 10	15
Orange	ONKA-1944	10 x 20	10

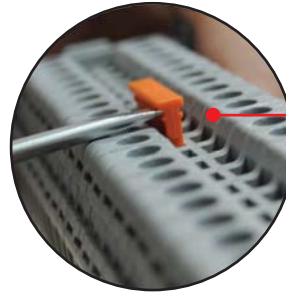
CODE KOD	TYPE CİNSİ	BOX K./ AD.
ONKA-2257	16 x 2	50
ONKA-2258	16 x 3	40
ONKA-2259	16 x 4	40
ONKA-2260	16 x 5	25
ONKA-2261	16 x 6	10
ONKA-2262	16 x 7	10
ONKA-2263	16 x 8	10
ONKA-2264	16 x 9	10
ONKA-2265	16 x 10	10
ONKA-2266	35 x 2	50
ONKA-2267	35 x 3	40
ONKA-2268	35 x 4	40
ONKA-2269	35 x 5	25
ONKA-2270	35 x 6	10
ONKA-2271	35 x 7	10
ONKA-2272	35 x 8	10
ONKA-2273	35 x 9	10
ONKA-2274	35 x 10	10



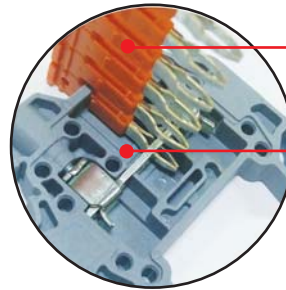
- The metal parts can not be certainly dissolved in the case of the plastic isolation part's monolithic.
- Plastik izolasyon bölümünün yekpare olması sayesinde metal aksam kesinlikle dağılmamaktadır.



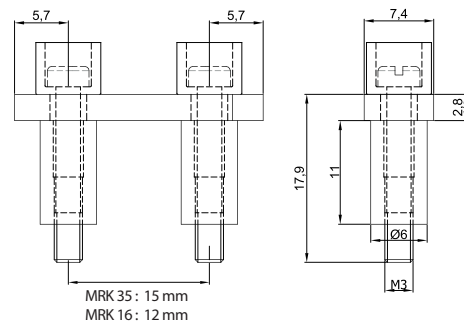
- It can be cutted in the middle of the comb bridge (example 10 and 20 pin bridges).
- Köprünün üzerindeki kesme kanalları sayesinde pin aralığının tam ortasından kesilebilme imkanı sunmaktadır.
- * Bu özellik 10 Pinli ve 20 Pinli üst köprüler için geçerlidir.

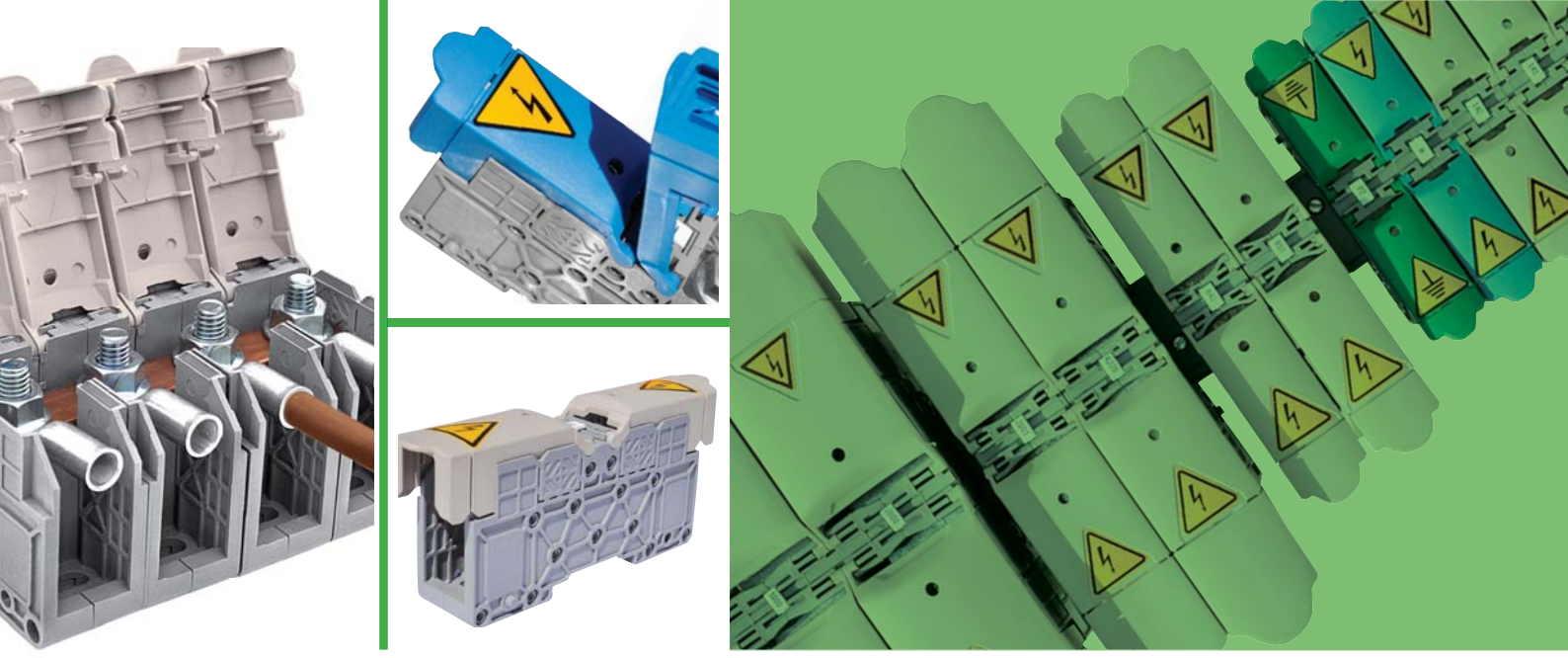


- It can be easily removed with the screwdriver in the case of the notch over the bridge.
- Köprünün üzerindeki çentik sayesinde tornavida ile rahatlıkla sökülebilmektedir.



- It is provided the bridge to the terminal within the plastic parts.
- Plastik tırnak sayesinde köprünün klemense tutunması sağlanmaktadır.
- In the case of the pin's curved and diagonal structure it can be touched from 4 points to copper busbar.
- Pin ucunun kavisli ve çapraz yapısı sayesinde dört noktadan bakır baraya temas etmektedir.





MRK SERİSİ PAPUÇ BAĞLANTILI KLEMENSLER

Bu üründe hedeflenen, yüksek kesitli kablolarda çok daha sağlıklı bir yöntem ile bağlantıyı sağlamaktır. Vibrasyonlu ortamlarda papuç bağlantı klemensleri çok daha güvenilir olarak kabul edilen bir bağlantı yöntemidir.

Papuç bağlantı klemenslerinde, yüksek kesitli kablo ucuna önce SKP papuç sağlam bir şekilde sıkılır. Sıkılan bu SKP papuç klemens üzerindeki vidaya takılarak belirtilen tork değerinde montaj yapılır. Bu şekilde iki iletken yüzey birbirine temas eder. Papuç bağlantı klemenslerin de birbirine temas eden iletken yüzey alanı daha fazla olduğu için yüksek akımlar da rahatlıkla kullanılabilir. Papuç bağlantı klemenslerin de ilk olarak 25mm², 35mm², 50mm² lik kablo kesitini kapsayan klemensimiz üretilmiştir. Devamında ise 70mm² - 95mm² ve 120mm² - 150mm² lik kablo kesitini kapsayan diğer ürünümüz üretilmiştir. Son olarak da 185mm² - 240mm² lik kablo kesitini kapsayan ürünümüz üretilmiştir.

Bu üründe bir gövde birkaç farklı kablo kesitini kapsamaktadır. Sadece kablo kesitiyle doğru orantılı olarak Klemensin içerisindeki bakır baranın kalınlığı değişmektedir. Bakır baranın kalınlığı, kullanılan kablo kesitinin taşıması gereken maksimum akıma göre uluslararası standartlar baz alınarak belirlenmiştir. Bu sayede yüksek akımlarda güvenli bir şekilde tercih edilebilir. Papuç bağlantı klemenslerin de bağlantı, somunla sağlam bir şekilde sıkıldığı için vibrasyonlu ortamlarda titreşimden etkilenerek bağlantının çözülmesi gibi bir durum söz konusu değildir. Bu nedenle genellikle makine imalatçıları nın üç fazı bağlamak için yoğunlukla tercih ettiği bir üründür.

İkinci bir örnek olarak demir yolu sektörünü örnek verebiliriz. Tren ve metro vagonlarında da Papuç bağlantı klemenslerine sıkça rastlayabiliriz. Tren ve metro vagonlarının klima sistemlerinde kullanıldığı tüm dünyada görülmektedir. Diğer bir örnekte panoların ana girişlerinde üçfaz artı nötr bağlamak için kullanılmaktadır. Denizcilik sektöründe vibrasyonlu ortamlarda gemilerin makine dairelerinde yoğunlukla kullanıldığı bilinmektedir.

MRK SERIES STUD TERMINAL BLOCK FOR CABLE LUGS

Screwed Type Stud Terminal Blocks are more reliable when connection is in vibrating environments. Screwed Type Stud Terminal Blocks are preferred in three-phase systems as it is a healthier way of connection.

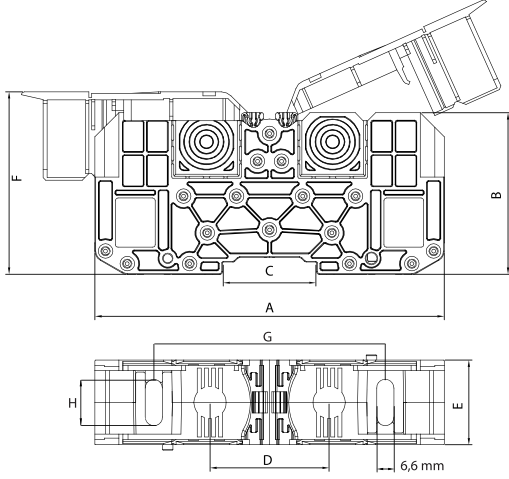
SKP lug is first screwed to high-profile cable end steadily in Screwed Type Terminal Blocks. That SKP lug is fitted to terminal block according to defined torque value. Thus, two conductive surfaces contact each other. Since two contacting conductive surfaces have more space in Screwed Type Stud Terminal Blocks, it is suitable for use in high currents. Terminal blocks for 25 mm², 35 mm², 50 mm², 70 mm², 95 mm², 120 mm², 150 mm², profile cables are in production. Next range of products will be for 185 mm² and 240 mm² profile cables.

Thickness of copper busbar inside terminal block varies proportionate to cable profile only. Thickness of copper busbar in defined in line with maximum current that cable profile in use is supposed to carry and based on international standards. Thus, it is safe to use in high currents.

Disconnection due to vibration in environments with vibration is not seen in Screwed Type Stud Terminal Blocks as the connection is screwed strongly with a nut. For this reason, it is the top choice of machinery manufacturers when connecting three phases.

They are also widely used in railway sector, air-conditioning systems of train and subway cars, maritime sector, in engine rooms of ships, and any other environments with vibration.

MRK SERIES STUD TERMINAL BLOCKS FOR CABLE LUGS (WITH COVER) MRK SERİSİ PABUÇ BAĞLANTILI BARALI KLEMENSLER (KAPAKLI)



MATERIAL / MATERYAL

Body / Gövde	PA6.6 V2
Legs / Bacaklar	PA6.6 V2
Cover / Kapak	PA6.6 V2
Bolt / Civata	Steel / Çelik
Nuts / Somun	Steel / Çelik
Bridge / Köprü	Copper / Bakır

ACCESSORIES / AKSESUARLAR

Stopper / Durdurucu	1202,1222,1212
Group Sticker/Grup Etiketi	1232
Marking / Markalama	9770 / 4440 / 4442 / 9540

* U_{imp} : Impact strength voltage / Darbe dayanımı gerilimi

DESCRIPTIONS / ÖZELLİKLER

CODE KOD	SECTION KESİT (mm ²)	BOLT CİVATA	TORQUE TORK (Nm)	CURRENT AKIM (A)	VOLTAGE VOLTAJ (V)	U_{imp} (V)	A (mm)	B (mm)	C (mm)	D (mm)	E (mm)	F (mm)	G (mm)	H (mm)	Pcs./Adet
2302	25	M6	6	100	750	4000	67,6	51	35	40	26,8	58,5	76,5	16,3	10
2322	35	M8	10	125	750	4000	67,6	51	35	40	26,8	58,5	76,5	16,3	10
2342	50	M8	10	150	750	4000	67,6	51	35	40	26,8	58,5	76,5	16,3	10
2362	70	M8	10	192	750	4000	88,6	60,8	35	43	31,6	68,5	86,5	17,3	10
2382	95	M8	10	232	1000	4000	88,6	60,8	35	43	31,6	68,5	86,5	17,3	10
2402	120	M12	14	269	1000	4000	122	69,7	35	60	41,3	78,5	94	17,3	5
2422	150	M12	14	309	1000	4000	122	69,7	35	60	41,3	78,5	94	17,3	5
2442	185	M12	14	353	1000	4000	138	77,2	35	60	55	92	96,5	26,5	5
2462	240	M12	14	415	1000	4000	138	77,2	35	60	55	92	96,5	26,5	5