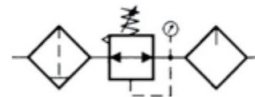


## GFC Series Treatment Dyad

### ● Ordering Code

|            |             |                           |
|------------|-------------|---------------------------|
| <b>GFC</b> | <b>2000</b> | <b>U</b>                  |
| Series     | Type        | Iron Shell                |
|            | 1500        | No Mark :                 |
|            | 2000        | 1500 ~ 2000 No Shell      |
|            | 3000        | 3000 ~ 4000 With Shell    |
|            | 4000        | U: 1500 ~ 2000 With Shell |

### ■ Graphics Sign



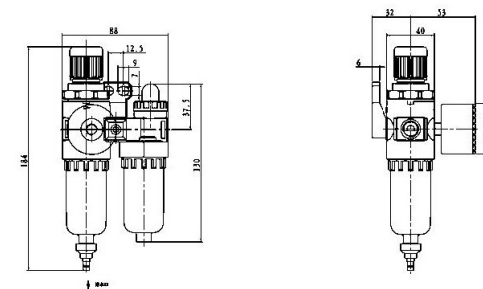
● GFC2000    ● GFC2000-U    ● GFC3000

### ■ Technical Parameter

| Specification               | GFC1500               | GFC2000 | GFC3000 | GFC4000 |         |
|-----------------------------|-----------------------|---------|---------|---------|---------|
| Applicable Medium           | Air                   |         |         |         |         |
| Pipe Size                   | G1/8                  | G1/4    | G3/8    | G1/2    |         |
| Filtration                  | 5 μm ~ 40 μm          |         |         |         |         |
| Applicable Pressure Range   | 0.05 ~ 0.9MPa         |         |         |         |         |
| Medium Temperature          | 0 ~ 60°C              |         |         |         |         |
| Recommended Lubricating Oil | ISOVG32 or Equivalent |         |         |         |         |
| Type of Valve               | Relief Type           |         |         |         |         |
| Gauge Port Size             | G1/8                  |         | G1/4    |         |         |
| Components                  | Filter Regulator      | GFR1500 | GFR2000 | GFR3000 | GFR4000 |
|                             | Air Lubricator        | GL1500  | GL2000  | GL3000  | GL4000  |

### ■ Figure Dimension

#### ● GFC2000



#### ● GFC3000

