

## TD Series Solenoid Valve



● TD-15



● TD-10

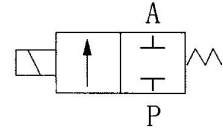


● TD-08



● TD-06

### ■ Graphics Sign



### ● Ordering Code

TD

Series

06

Pipe size  
06 : G1/8  
08 : G1/4  
10 : G3/8  
15 : G1/2

AC220V

Standard Voltage  
AC220V  
AC110V  
DC24V

### ■ Specific Property

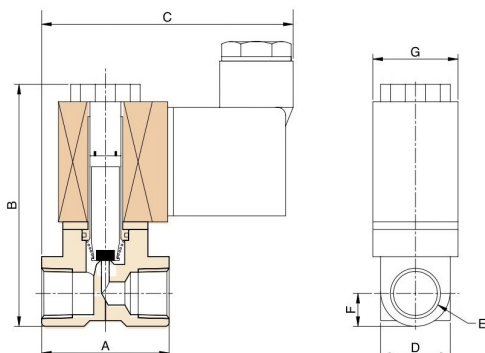
This valve has direct action type piston and quick action, with multiple purposes, high efficiency, long service life, good waterproof performance, multiple wiring directions and handsome shape.

II

### ■ Technical Parameter

Item \ Specification	TD-06	TD-08	TD-10	TD-15
Material of Body	Brass			
Control Method	Direct Action Type			
Pipe Size	G1/8	G1/4	G3/8	G1/2
Nominal Diameter (mm)	2	2	3	3
Pressure Range	0 ~ 1.0MPa			
Applicable Medium	Air	Water	Oil	
Medium Temperature	-10 ~ 60°C	1 ~ 60°C	-5 ~ 60°C	
Specified Voltage	AC24V, AC36V, AC110V, AC220V, DC24V, DC110V			
Operating Voltage Range	±10%			
Min. Activating Time	0.05S			

### ■ Figure Dimension



Specification	A	B	C	D	E	F	G
TD-06	33	65	65	18	G1/8	9	22
TD-08	33	65	65	18	G1/4	9	22
TD-10	49	68	78	23	G3/8	10	34
TD-15	54	69	80	25	G1/2	12.5	34