



# ∅36mm Integrative Signal tower

## PRODUCT CODE FOR SINGLE LAYER SIGNAL TOWER



JD36E1-Order type1+Order type2+Order type3+Order type4

	Optical source type		Luminescence modes		Color		Voltage graduation	
	Optical source	Order type1	Modes	Order type2	Color	Order type3	Voltage	Order type4
	LED	L	Permanent Blink* Rotating flash*	01 02 03	Red	R	DC 24V	024
					Green	G		
					Yellow	Y		
					White	W		
					Blue	S		
	Super Bright LED	H	Permanent Blink* Rotating flash*	01 02 03	Red	R	AC 220V	122
					Green	G		
					Yellow	Y		
					White	W		
					Blue	S		

Remark: DC are suitable for AC (the two are universal).Special voltage can be ordered. The color are arranged from the bottom up.

## PRODUCT CODE FOR DOUBLE- LAYER SIGNAL TOWER

JD36E2-Order type1+Order type2+Order type3+Order type4+Order type5

	Optical source type		Luminescence modes		Color		Color		Voltage graduation	
	Optical source	Order type1	Modes	Order type2	Color	Order type3	Color	Order type3	Voltage	Order type4
	LED	L	Permanent Blink* Rotating flash*	01 02 03	Red	R	Red	R	DC 24V	024
					Green	G	Green	G		
					Yellow	Y	Yellow	Y		
					White	W	White	W		
					Blue	S	Blue	S		
	Super Bright LED	H	Permanent Blink* Rotating flash*	01 02 03	Red	R	Red	R	AC 220V	122
					Green	G	Green	G		
					Yellow	Y	Yellow	Y		
					White	W	White	W		
					Blue	S	Blue	S		



Remark: DC are suitable for AC (the two are universal).Special voltage can be ordered. The color are arranged from the bottom up.

The product with the mark of "\*" can not be provided for the moment

# TAYE

## PRODUCT CODE FOR THREE-LAYER SIGNAL


JD36E3-Order type1+Order type2+Order type3+Order type4+Order type5+Order type6

	Optical source type		Luminescence modes		Color		Color		Color		Voltage graduation	
	Optical source	Order type1	Modes	Order type2	Color	Order type3	Color	Order type4	Color	Order type5	Voltage	Order type6
	LED	L	Permanent Blink Rotating flash	01 02 03	Red Green Yellow White Blue	R G Y W S	Red Green Yellow White Blue	R G Y W S	Red Green Yellow White Blue	R G Y W S	DC 24V	024
	Super Bright LED	H	Permanent Blink Rotating flash	01 02 03	Red Green Yellow White Blue	R G Y W S	Red Green Yellow White Blue	R G Y W S	Red Green Yellow White Blue	R G Y W S	AC 220V	122

Remark: DC are suitable for AC (the two are universal).Special voltage can be ordered. The color are arranged from the bottom up. The product with the mark of "\*" can not be provided for the moment

## PRODUCT CODE FOR SIGNAL TOWER WITH SINGLE BUZZER



JD36F1-Order type1+Order type2+Order type3+Order type4+Order type5

	Sonic source type	Sound mode	Decibel	Color	Voltage
	Order type1	Order type2	Order type3	Order type4	Order type5
	Buzzer F	Continuous 01 Intermittent 02	100dB 10	Black B	DC 24V 024 AC 220V 122

Remark: DC are suitable for AC (the two are universal).Special voltage can be ordered.

## PRODUCT CODE FOR SINGLE LAYER SIGNAL TOWER+SINGLE BUZZER



JD36F2-Order type1+Order type2+Order type3+Order type4+Order type5+Order type6+Order type7+Order type8

	Optical source type	Luminescence modes	Color	Sonic source	Sound mode	Decibel	Color	Voltage graduation
	Order type1	Order type2	Order type3	Order type4	Order type5	Order type6	Order type7	Order type8
	LED <b>L</b>	Permanent <b>01</b> Blink' <b>02</b> Rotating flash' <b>03</b>	Red R	Buzzer <b>F</b>	Continuous <b>01</b> Intermittent <b>02</b>	100dB <b>10</b>	Black <b>B</b>	DC 24V <b>024</b> AC 220V <b>122</b>
	Super Bright LED <b>H</b>		Green G					

Remark: DC are suitable for AC (the two are universal);Special voltage can be ordered.;The color are arranged from the bottom up; the buzzer should located on the top layer; The product with the mark of "\*" can not be provided for the moment

## PRODUCT CODE FOR DOUBLE-LAYER SIGNAL TOWER+SINGLE BUZZER

JD36F3-Order type1+Order type2+Order type3+Order type4+Order type5+Order type6+Order type7+Order type8+Order type9

	Optical source type	Luminescence modes	Color	Color	Audible source	Sound mode	Decibel	Color	Voltage graduation
	Order type1	Order type2	Order type3	Order type4	Order type5	Order type6	Order type7	Order type8	Order type9
	LED <b>L</b>	Permanent <b>01</b> Blink' <b>02</b> Rotating flash' <b>03</b>	Red R	Red R	Buzzer <b>F</b>	Continuous <b>01</b> Intermittent <b>02</b>	100dB <b>10</b>	Black <b>B</b>	DC 24V <b>024</b> AC 220V <b>122</b>
	Super Bright LED <b>H</b>		Green G	Yellow Y					

Remark: DC are suitable for AC (the two are universal);Special voltage can be ordered.;The color are arranged from the bottom up; the buzzer should located on the top layer; The product with the mark of "\*" can not be provided for the moment

# TAYE

## PRODUCTION TYPE

### Three-layer Signal tower



→ Green+Yellow+Red  
LED permanent DC24V  
JD36E3-L01GYR024

→ Sidemount base  
C-6

### Double-layer Signal tower + single buzzer

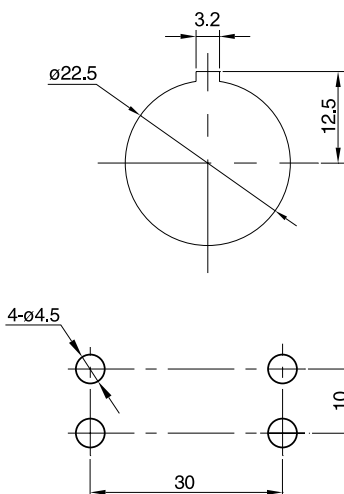


→ Green+Yellow+Buzzer  
LED permanent DC24V  
JD36F3-L01GYF0110B024

→ Sidemount base  
C-6

## Dimension drawing

### Dimension drawing for mounting hole

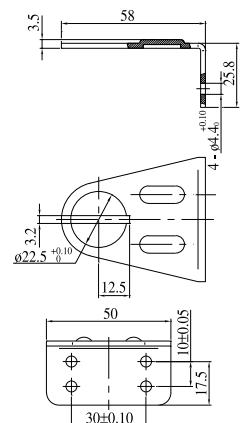


→ To install  
base vertically

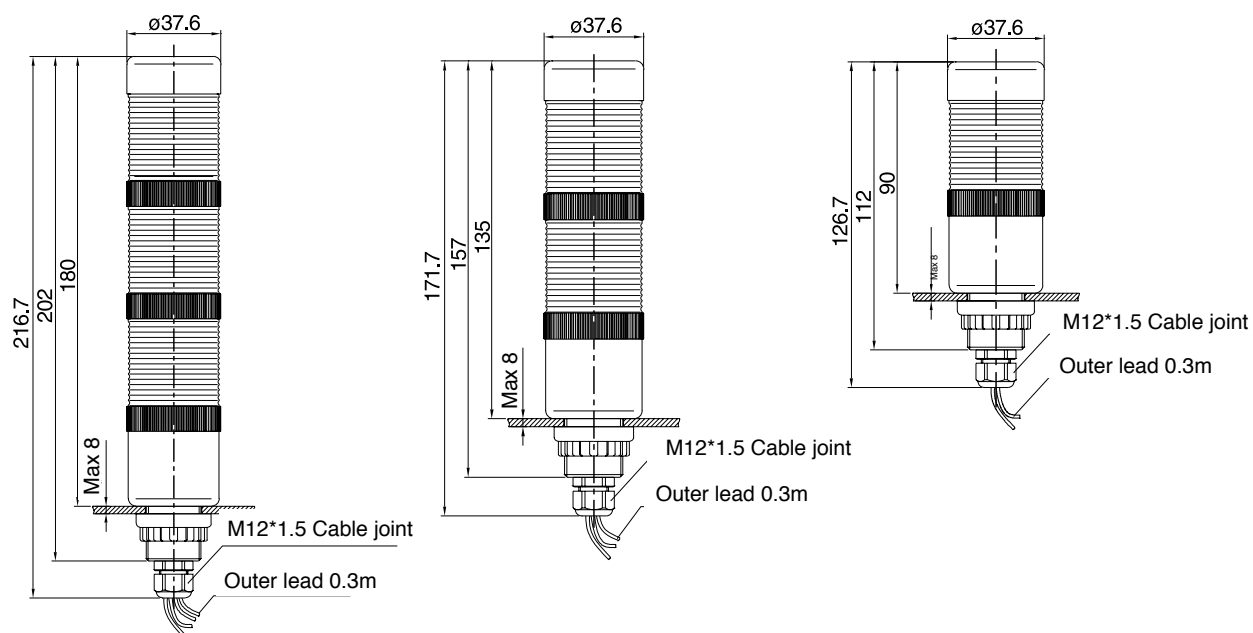
→ To sidemount base

## Accessory

### Sidemount base C-9



## Appearance dimension





### Connecting Instruction

The black wire is common, when connecting black wire with red wire, the red light is on; when connecting black wire with green wire, the green light is on; when connecting black wire with yellow wire, the yellow light is on; when connecting black wire with white wire, the white light is on; when connecting black wire with blue wire, the blue light is on; when connecting black wire with black wire, the buzzer sound

# ∅50mm Integrative Signal tower

## Product code for Single layer Signal tower



JD50E1-Order type1+Order type2+Order type3+Order type4

	Optical source type		Luminescence modes		Color		Voltage graduation	
	Optical source	Order type1	Modes	Order type2	Color	Order type3	Voltage	Order type4
	LED	L	Permanent Blink*	01 02	Red Green Yellow White Blue	R G Y W S	DC 24V	024
	Super Bright LED	H	Permanent Blink*	01 02	Red Green Yellow White Blue	R G Y W S	AC 220V	122

Remark: DC are suitable for AC (the two are universal). Special voltage can be ordered. The color are arranged from the bottom up. The product with the mark of "\*" can not be provided for the moment

## Product code for Double-layer Signal tower

JD36E2-Order type1+Order type2+Order type3+Order type4+Order type5

	Optical source type		Luminescence modes		Color		Color		Voltage graduation	
	Optical source	Order type1	Modes	Order type2	Color	Order type3	Color	Order type4	Voltage	Order type5
	LED	L	Permanent Blink*	01 02	Red Green Yellow White Blue	R G Y W S	Red Green Yellow White Blue	R G Y W S	DC 24V	024
	Super Bright LED	H	Permanent Blink*	01 02	Red Green Yellow White Blue	R G Y W S	Red Green Yellow White Blue	R G Y W S	AC 220V	122

Remark: DC are suitable for AC (the two are universal). Special voltage can be ordered. The color are arranged from the bottom up. The product with the mark of "\*" can not be provided for the moment