

## KA系列单向阀 KA Series Check Valve



### 产品说明 Product Explain

该阀是一种单向方向控制元件，当工作介质通过本阀时，只能沿着一个给定的方向流动。在工作中，如果介质压力方向有变化时，本阀可起截止作用，使系统中介质不能返回，故本产品又叫逆止阀。

The valve is unidirectional control element. When passing the valve, the working medium can only flow along a given direction. In operation, when the medium pressure direction changes, the valve functions to stop the return of the medium in the system. Therefore, the product is also called non-return valve.

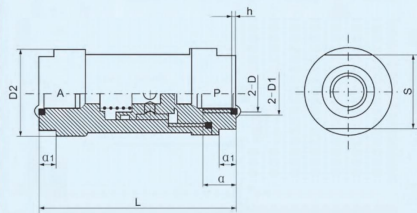
### 图形符号 Graphic Symbol



### 规格 Specification

型号 Model	KA-L6	KA-L8	KA-L10	KA-L15	KA-L20	KA-L25	KA-L32	KA-L40	KA-L50
工作压力 Working-pressure	0.05 ~ 0.8MPa								
环境温度 Entirment Temperature	-10 ~ +55℃								
介质温度 Medium Temperature	0 ~ +55℃								
流通能力S值 (mm <sup>3</sup> ) Circulating Ability	10	20	40	60	110	190	300	400	650
开启能力 Startup Ability	≤ 0.03MPa								
泄漏量 (cm <sup>3</sup> /min) Leak Out Flow	50	50	120	120	250	250	500	500	500
响应时间(Sec) Respond Time	0.03								
寿命 (万次) Life (Ten thousand Times)	≥150								

### 外形尺寸 Overall Dimension



### 尺寸表 Dimension Sheet

型号 Model	公称口径 Joint Pipe Code	D	D1	D2	S	L	a	a1	h
KA-L6	G1/8 M10×1	φ13	φ28	24	64	10	6	1.4	0.1
KA-L8	G1/4 M12×1.5	φ16	φ28	24	64	12	6	1.4	0.1
KA-L10	G3/8 M16×1.5	φ20	φ40	36	86	14	10	1.8	0.1
KA-L15	G1/2 M20×1.5	φ26	φ40	36	86	14	10	1.8	0.1
KA-L20	G3/4 M27×2	φ32	φ55	46	112	21	12	1.8	0.1
KA-L25	G1 M33×2	φ40	φ55	46	112	23	12	2.7	0.12
KA-L32	G1 1/4 M42×2	φ48	φ88	75	161	25	22	2.7	0.12
KA-L40	G1 1/2 M48×2	φ54	φ88	75	161	26	26	2.7	0.12
KA-L50	G2 M60×2	φ70	φ100	90	95	26	26	4.5	0.18

## KAM系列单向阀 KAM Series Check Valve



### 订购码 Ordering Code

KAM

15

系列代号

Series Code  
KAM系列单向阀

KAM Series Check Valve

接管口径 / Joint Pipe Bore

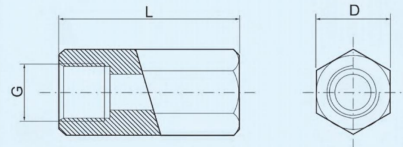
06: G1/8" 10: G3/8"  
08: G1/4" 15: G1/2"

电磁阀  
Soleniod  
Valve

### 规格 Specification

型号 Model	KAM-06	KAM-08	KAM-10	KAM-15
接口螺纹 Joint Threaded	G1/8	G1/4	G3/8	G1/2
流量 mm <sup>3</sup> /S Flow	10	20	40	60
泄漏量 (cm <sup>3</sup> /min) Leak Out Flow	≤45	≤60	≤80	≤95
使用介质 Operation Medium	压缩空气 / Compress Air			
工作温度 Working Temperature	-5 ~ 60℃			
工作压力 Working Pressure	0.05 ~ 1.2MPa			

### 外形尺寸 Overall Dimension



### 尺寸表 Dimension Sheet

型号 Model	G	L	D
KAM-06	G1/8"	37	14
KAM-08	G1/4"	48	17
KAM-10	G3/8"	50	21
KAM-15	G1/2"	60	24