

## RE系列流量控制阀 RE Series Flow Control Valve



RE-01

RE-02

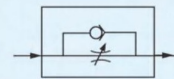
RE-03

RE-04

### 订购码 Ordering Code

<b>RE</b>	-	<b>01</b>
系列代号/Series Code		接管口径/Joint Pipe Bore
RE: 普通型流量控制阀 RE: Ordinary Type Flow Control Valve		01: G1/8" 03: G3/8" 02: G1/4" 04: G1/2"

### 图形符号 Graphic Symbol



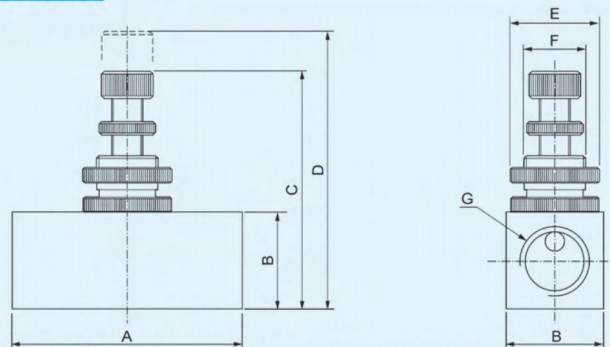
电磁阀  
Solenoid  
Valve

### 规格 Specification

型号 Model	RE-01	RE-02	RE-03	RE-04
接管口径 Joint Pipe Bore	G1/8"	G1/4"	G3/8"	G1/2"
工作介质 Working Medium	空气 / Air			
使用压力范围 Working-pressure Range	0~0.95MPa			
使用温度范围 Operating Temperature Range	0~60℃			

### 外形尺寸 Overall Dimension

RE系列/Series



### 尺寸表 Dimension Sheet

型号 / 符号 Model / Symbol	A	B	C	D	E	F	G
RE-01	45	19	43	50	φ 19	M14×1	G1/8
RE-02	45	19	43	50	φ 19	M14×1	G1/4
RE-03	55	25	55	62	φ 25	M18×1	G3/8
RE-04	55	25	55	62	φ 25	M18×1	G1/2