

## ST系列梭阀 ST Series Shuttle Valve



ST-01



ST-02

### 订购码 Ordering Code



系列代码

ST: 梭阀

Series Code

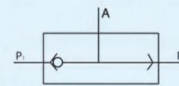
ST: Shuttle Valve

接管口径 / Joint Pipe Bore

01: G1/8" 02: G1/4" 03: G3/8"

04: G1/2" 06: G3/4" 08: G1"

### 图形符号 Graphic Symbol

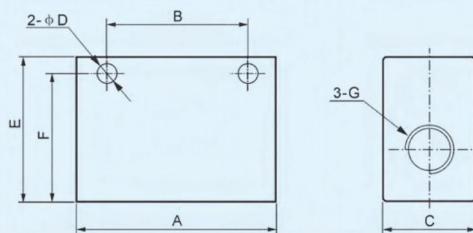


电磁阀  
 Solenoid  
 Valve

### 规格 Specification

型号 Model	ST-01	ST-02	ST-03	ST-04	ST-06	ST-08
工作介质 Working Medium	空气 / Air					
有效截面积 Effective Sectional Area	7.5mm <sup>2</sup>	21mm <sup>2</sup>	40mm <sup>2</sup>	60mm <sup>2</sup>	110mm <sup>2</sup>	190mm <sup>2</sup>
接管口径 Joint Pipe Bore	G1/8"	G1/4"	G3/8"	G1/2"	G3/4"	G1"
使用压力范围 Working-pressure Range	0~1.0MPa					
使用温度范围 Operating Temperature	0~60℃					

### 外形尺寸 Overall Dimension



### 尺寸表 Dimension Sheet

型号 / 符号 Model / Symbol	A	B	C	D	E	F	G
ST-01	40	24	16	4.5	25	20.5	G1/8"
ST-02	50	35	22	5.5	35	25	G1/4"
ST-03	75	48	30	7	50	42	G3/8"
ST-04	75	48	30	7	50	42	G1/2"
ST-06	110	72	40	7	70	58	G3/4"
ST-08	110	72	40	7	70	58	G1"