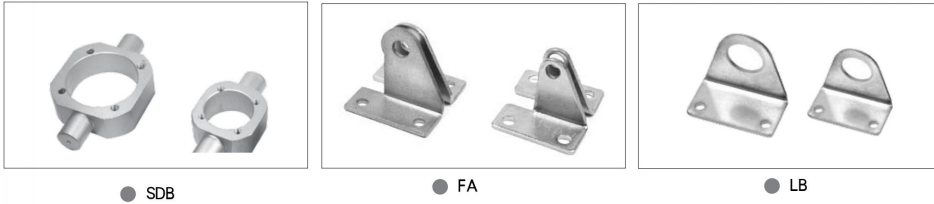


TGA/TGM/TGL Installing Accessories

Accord : ISO6432



● SDB

● FA

● LB

● Ordering Code

TGA/TGM

Cylinder type

32

Bore

LB

Accessories type

■ Accessories Selection

Type/Accessory	TGA	TGAC	TGSA	TGAD	TGCD	TGAJ	TGACJ	TGAR	TGARC
FA	●	●	●	●	●	●	●	×	×
LB	●	●	●	●	●	●	●	×	×
SDB	●	●	●	×	×	×	×	×	×

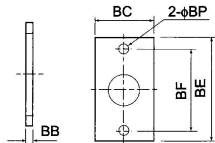
■ Accessories Selection

Type/Accessory	TGM	TGSM	TGMD	TGMJ
FB	●	●	●	●
LB	●	●	●	●
SDB	●	●	×	×

■ Figure Dimension

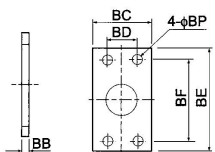
● FA

- $\phi 16 \sim \phi 25$
- $\phi 20 \sim \phi 25$



Bore	BB	BC	BD	BE	BF	BP
16	3	26	—	52	40	5,5
20	4	38	—	64	50	6,5
25	4	38	—	64	50	6,5
32	4	47	33	72	58	6,5
40	4	50	36	84	70	6,5

● $\phi 32 \sim \phi 40$

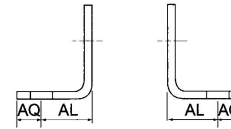


Bore	BB	BC	BD	BE	BF	BP
20	4	38	—	64	50	6,5
25	4	38	—	64	50	6,5
32	4	47	33	72	58	6,5
40	4	50	36	84	70	6,5

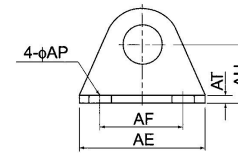
TGA/TGM/TGL Installing Accessories

Accord : ISO6432

● LB

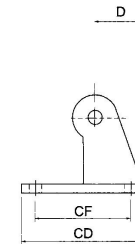


Bore	AE	AF	AL	AO	AP	AT	AH
16	44	32	13	6	5,5	3	20
20	54	40	15	8	6,5	3	25
25	54	40	15	8	6,5	3	25
32	59	45	25	8	6,5	4	32
40	64	50	25	8	6,5	4,5	36

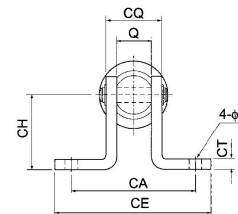


Bore	AE	AF	AL	AO	AP	AT	AH
20	54	40	15	8	6,5	3	25
25	54	40	15	8	6,5	3	25
32	59	45	25	8	6,5	4	32
40	64	50	25	8	6,5	4,5	36

● SDB



Bore	D	Q	CA	CD	CE	CF	CH	CT	CP	CQ
16	16	12	—	23	—	12	20	2,3	5,5	16,5
20	21	16	51	48	67	32	32	3	6,5	22
25	21	16	51	48	67	32	32	3	6,5	22
32	27	16	51	52	67	36	36	4	6,5	24
40	27	20	55	56	71	40	40	4	6,5	28



Bore	D	Q	CA	CD	CE	CF	CH	CT	CP	CQ
20	21	16	51	48	67	32	32	3	6,5	22
25	21	16	51	48	67	32	32	3	6,5	22
32	27	16	51	52	67	36	36	4	6,5	24
40	27	20	55	56	71	40	40	4	6,5	28