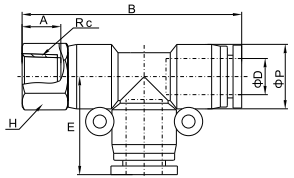


## Metric Size-R(PT,BSPT)Thread Fittings

## Metric Size-R(PT,BSPT)Thread Fittings

### PDF

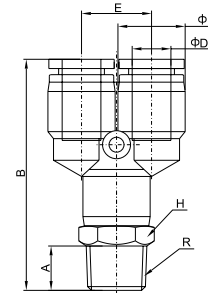
### Female Run Tee



Model	ΦD	E	B	ΦP	A	R	H
PDF04-M5	4	18	40.5	11	4	M5	10
PDF04-01		18	43	11	7	R1/8	10
PDF04-02		18	46	11	9.5	R1/4	14
PDF06-M5	6	19	42	13.4	4	M5	12
PDF06-01		19	45	13.4	7	R1/8	12
PDF06-02		19	47.5	13.4	9.5	R1/4	14
PDF06-03		19	48.5	13.4	10	R3/8	17
PDF06-04	19	53	13.4	13	R1/2	21	
PDF08-01	8	23	51.5	15	7	R1/8	14
PDF08-02		23	55	15	9.5	R1/4	14
PDF08-03		23	56	15	10	R3/8	17
PDF08-04		23	59	15	13	R1/2	21
PDF10-01	10	28	62	18.8	7	R1/8	17
PDF10-02		28	65	18.8	9.5	R1/4	17
PDF10-03		28	66.5	18.8	10	R3/8	17
PDF10-04		28	69.5	18.8	13	R1/2	21
PDF12-01	12	29.5	66	21	7	R1/8	21
PDF12-02		29.5	68	21	9.5	R1/4	21
PDF12-03		29.5	68.5	21	10	R3/8	21
PDF12-04		29.5	71.5	21	13	R1/2	21
PDF16-02	16	31	72.5	26	9.5	R1/4	24
PDF16-03		31	73	26	10	R3/8	24
PDF16-04		31	76	26	13	R1/2	24

### PX

### Male Y



Model	ΦD	E	B	ΦP	A	R	H
PX04-M5	4	11	39.5	11	4	M5	10
PX04-M6		11	39.5	11	4.1	M6	10
PX04-01		11	42	11	7	R1/8	10
PX04-02	1	45	1	9.5	R1/4	14	
PX06-M5	6	13.4	40.5	13.4	4	M5	12
PX06-M6		13.4	40.5	13.4	4.1	M6	12
PX06-01		13.4	43.5	13.4	7	R1/8	12
PX06-02		13.4	46.5	13.4	9.5	R1/4	14
PX06-03	13.4	47.5	13.4	10	R3/8	17	
PX06-04	13.4	51.5	13.4	13	R1/2	21	
PX08-01	8	15	46	15	7	R1/8	14
PX08-02		15	49.5	15	9.5	R1/4	14
PX08-03		15	51	15	10	R3/8	17
PX08-04		15	54	15	13	R1/2	21
PX10-01	10	18.8	60	18.8	7	R1/8	17
PX10-02		18.8	63	18.8	9.5	R1/4	17
PX10-03		18.8	64	18.8	10	R3/8	17
PX10-04		18.8	66.5	18.8	13	R1/2	21
PX12-01	12	21	65	21	7	R1/8	19
PX12-02		21	70	21	9.5	R1/4	19
PX12-03		21	70.5	21	10	R3/8	19
PX12-04		21	73	21	13	R1/2	21